

Product datasheet for **TA333396**

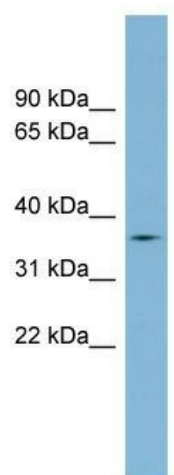
TMPRSS12 Rabbit Polyclonal Antibody

Product data:

Product Type:	Primary Antibodies
Applications:	WB
Recommended Dilution:	WB
Reactivity:	Human
Host:	Rabbit
Isotype:	IgG
Clonality:	Polyclonal
Immunogen:	The immunogen for Anti-TMPRSS12 Antibody: synthetic peptide directed towards the middle region of human TMPRSS12. Synthetic peptide located within the following region: KEEGNATNILQDAEVHYISREMCNSERSYGGIIPNTSFCAGDEDGAFDTC
Formulation:	Liquid. Purified antibody supplied in 1x PBS buffer with 0.09% (w/v) sodium azide and 2% sucrose. <i>Note that this product is shipped as lyophilized powder to China customers.</i>
Purification:	Affinity Purified
Conjugation:	Unconjugated
Storage:	Store at -20°C as received.
Stability:	Stable for 12 months from date of receipt.
Predicted Protein Size:	38 kDa
Gene Name:	transmembrane protease, serine 12
Database Link:	NP_872365 Entrez Gene 283471 Human Q86WS5
Background:	The function of this protein remains unknown.
Synonyms:	CT151
Note:	Immunogen sequence homology: Human: 100%; Pig: 86%; Rat: 86%; Guinea pig: 86%; Rabbit: 79%
Protein Families:	Druggable Genome, Transmembrane



[View online »](#)

Product images:

WB Suggested Anti-TMPRSS12 Antibody Titration:
0.2-1 ug/ml; ELISA Titer: 1:1562500; Positive
Control: Human Thymus