

Product datasheet for TA333395

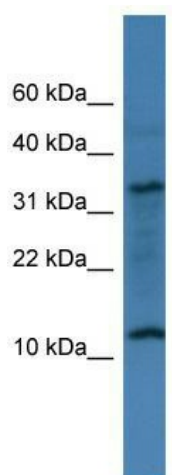
LINC02914 Rabbit Polyclonal Antibody

Product data:

Product Type:	Primary Antibodies
Applications:	WB
Recommended Dilution:	WB
Reactivity:	Human
Host:	Rabbit
Isotype:	IgG
Clonality:	Polyclonal
Immunogen:	The immunogen for Anti-C14orf177 Antibody: synthetic peptide directed towards the N terminal of human C14orf177. Synthetic peptide located within the following region: HKQGTKPMITRPSVSQLGEGKCPSSQHLQSLRHNKQHALTLTKARCCGEC
Formulation:	Liquid. Purified antibody supplied in 1x PBS buffer with 0.09% (w/v) sodium azide and 2% sucrose.
Purification:	Affinity Purified
Conjugation:	Unconjugated
Storage:	Store at -20°C as received.
Stability:	Stable for 12 months from date of receipt.
Predicted Protein Size:	14 kDa
Gene Name:	chromosome 14 open reading frame 177
Database Link:	NP_872366 Entrez Gene 283598 Human
Background:	The function of C14orf177 remains unknown.
Synonyms:	FLJ25773
Note:	Immunogen sequence homology: Human: 100%


[View online »](#)

Product images:



WB Suggested Anti-C14orf177 Antibody Titration:
0.2-1 ug/ml; ELISA Titer: 1:312500; Positive
Control: 721_B cell lysate