

Product datasheet for **TA333393**

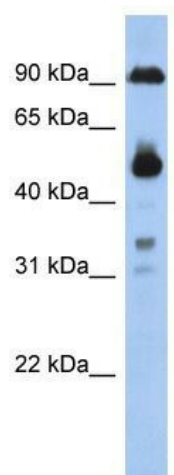
CCDC144B Rabbit Polyclonal Antibody

Product data:

Product Type:	Primary Antibodies
Applications:	WB
Recommended Dilution:	WB
Reactivity:	Human
Host:	Rabbit
Isotype:	IgG
Clonality:	Polyclonal
Immunogen:	The immunogen for Anti-CCDC144B Antibody: synthetic peptide directed towards the middle region of human CCDC144B. Synthetic peptide located within the following region: TELSGTLTDGTTVGNDDDDGLNQQIPRKENEHHRPADKTANEKNKVKNQI
Formulation:	Liquid. Purified antibody supplied in 1x PBS buffer with 0.09% (w/v) sodium azide and 2% sucrose. <i>Note that this product is shipped as lyophilized powder to China customers.</i>
Purification:	Affinity Purified
Conjugation:	Unconjugated
Storage:	Store at -20°C as received.
Stability:	Stable for 12 months from date of receipt.
Predicted Protein Size:	83 kDa
Database Link:	NP_872374 Entrez Gene 284047 Human
Background:	The specific function of this protein remains unknown.
Synonyms:	coiled-coil domain containing 144B; FLJ36492; MGC126634
Note:	Immunogen sequence homology: Human: 100%



[View online »](#)

Product images:

WB Suggested Anti-CCDC144B Antibody Titration:
0.2-1 ug/ml; ELISA Titer: 1:1562500; Positive
Control: 293T cell lysate