

Product datasheet for **TA333392**

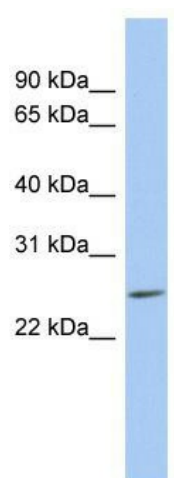
LYPD5 Rabbit Polyclonal Antibody

Product data:

Product Type:	Primary Antibodies
Applications:	WB
Recommended Dilution:	WB
Reactivity:	Human
Host:	Rabbit
Isotype:	IgG
Clonality:	Polyclonal
Immunogen:	The immunogen for Anti-LYPD5 Antibody: synthetic peptide directed towards the N terminal of human LYPD5. Synthetic peptide located within the following region: WTGPPAGQTQSNADALPPDYSVVRGCTTDKCNAHLMTHDALPNLSQAPDP
Formulation:	Liquid. Purified antibody supplied in 1x PBS buffer with 0.09% (w/v) sodium azide and 2% sucrose. <i>Note that this product is shipped as lyophilized powder to China customers.</i>
Purification:	Affinity Purified
Conjugation:	Unconjugated
Storage:	Store at -20°C as received.
Stability:	Stable for 12 months from date of receipt.
Predicted Protein Size:	22 kDa
Gene Name:	LY6/PLAUR domain containing 5
Database Link:	NP_872379 Entrez Gene 284348 Human Q6UWN5
Background:	The specific function of this protein remains unknown.
Synonyms:	PRO4356
Note:	Immunogen sequence homology: Human: 100%
Protein Families:	Druggable Genome



[View online »](#)

Product images:

WB Suggested Anti-LYPD5 Antibody Titration: 0.2-1 ug/ml; ELISA Titer: 1:312500; Positive Control: MCF7 cell lysate