

Product datasheet for **TA333391**

MAMSTR Rabbit Polyclonal Antibody

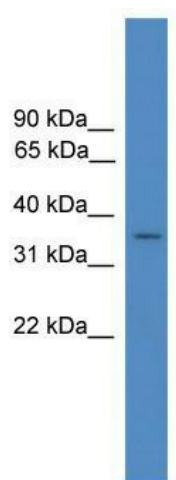
Product data:

Product Type:	Primary Antibodies
Applications:	WB
Recommended Dilution:	WB
Reactivity:	Human
Host:	Rabbit
Isotype:	IgG
Clonality:	Polyclonal
Immunogen:	The immunogen for Anti-FLJ36070 Antibody: synthetic peptide directed towards the middle region of human FLJ36070. Synthetic peptide located within the following region: PRAADTPGTAPAPTPAPAAAPALTPSSGPGSAALTLEELQEAIRRAQ
Formulation:	Liquid. Purified antibody supplied in 1x PBS buffer with 0.09% (w/v) sodium azide and 2% sucrose.
Purification:	Affinity Purified
Conjugation:	Unconjugated
Storage:	Store at -20°C as received.
Stability:	Stable for 12 months from date of receipt.
Predicted Protein Size:	33 kDa
Gene Name:	MEF2 activating motif and SAP domain containing transcriptional regulator
Database Link:	NP_872380 Entrez Gene 284358 Human Q6ZN01
Background:	FLJ36070 is a transcriptional coactivator. FLJ36070 stimulates the transcriptional activity of MEF2C. FLJ36070 also stimulates MYOD1 activity in part via MEF2, resulting in an enhancement of skeletal muscle differentiation.
Synonyms:	MASTR
Note:	Immunogen sequence homology: Dog: 100%; Pig: 100%; Rat: 100%; Horse: 100%; Human: 100%; Mouse: 100%; Bovine: 100%; Rabbit: 100%; Zebrafish: 85%; Goat: 83%



[View online »](#)

Product images:



WB Suggested Anti-FLJ36070 Antibody Titration:
0.2-1 ug/ml; ELISA Titer: 1:312500; Positive
Control: Hela cell lysate