

## Product datasheet for **TA333390**

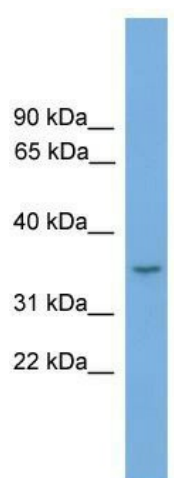
### **MAMSTR Rabbit Polyclonal Antibody**

#### **Product data:**

Product Type:	Primary Antibodies
Applications:	WB
Recommended Dilution:	WB
Reactivity:	Human
Host:	Rabbit
Isotype:	IgG
Clonality:	Polyclonal
Immunogen:	The immunogen for Anti-FLJ36070 Antibody: synthetic peptide directed towards the N terminal of human FLJ36070. Synthetic peptide located within the following region: QPHPRMKPSLTPCPPGVSPSPPPHKLELQTLKLEELTVSELRQQLRLR
Formulation:	Liquid. Purified antibody supplied in 1x PBS buffer with 0.09% (w/v) sodium azide and 2% sucrose.
Purification:	Affinity Purified
Conjugation:	Unconjugated
Storage:	Store at -20°C as received.
Stability:	Stable for 12 months from date of receipt.
Predicted Protein Size:	33 kDa
Gene Name:	MEF2 activating motif and SAP domain containing transcriptional regulator
Database Link:	<a href="#">NP_872380</a> <a href="#">Entrez Gene 284358 Human</a> <a href="#">Q6ZN01</a>
Background:	FLJ36070 is a transcriptional coactivator. FLJ36070 stimulates the transcriptional activity of MEF2C. FLJ36070 stimulates MYOD1 activity in part via MEF2, resulting in an enhancement of skeletal muscle differentiation.
Synonyms:	MASTR
Note:	Immunogen sequence homology: Dog: 100%; Pig: 100%; Rat: 100%; Horse: 100%; Human: 100%; Mouse: 100%; Bovine: 100%; Rabbit: 100%; Zebrafish: 79%; Guinea pig: 79%


[View online »](#)

## Product images:



WB Suggested Anti-FLJ36070 Antibody Titration:  
0.2-1 ug/ml; ELISA Titer: 1:62500; Positive Control:  
Human heart