

## Product datasheet for **TA333389**

### VSIG1 Rabbit Polyclonal Antibody

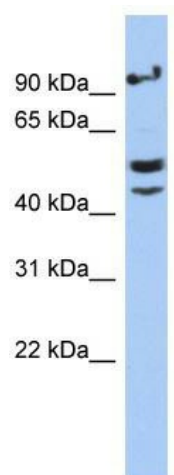
#### Product data:

Product Type:	Primary Antibodies
Applications:	WB
Recommended Dilution:	WB
Reactivity:	Human
Host:	Rabbit
Isotype:	IgG
Clonality:	Polyclonal
Immunogen:	The immunogen for Anti-VSIG1 Antibody: synthetic peptide directed towards the N terminal of human VSIG1. Synthetic peptide located within the following region: SIYFSQGGQAVAIGQFKDRITGSNDPGNASITISHMQPADSGIYICDVNN
Formulation:	Liquid. Purified antibody supplied in 1x PBS buffer with 0.09% (w/v) sodium azide and 2% sucrose. <i>Note that this product is shipped as lyophilized powder to China customers.</i>
Purification:	Affinity Purified
Conjugation:	Unconjugated
Storage:	Store at -20°C as received.
Stability:	Stable for 12 months from date of receipt.
Predicted Protein Size:	42 kDa
Gene Name:	V-set and immunoglobulin domain containing 1
Database Link:	<a href="#">NP_872413</a> <a href="#">Entrez Gene 340547 Human</a> <a href="#">Q86XK7</a>
Background:	The specific function of this protein remains unknown.
Synonyms:	1700062D20Rik; dj889N15.1; GPA34
Note:	Immunogen sequence homology: Human: 100%; Pig: 86%; Horse: 79%; Bovine: 79%
Protein Families:	Transmembrane



[View online »](#)

## Product images:



WB Suggested Anti-VSIG1 Antibody Titration: 0.2-1 ug/ml; ELISA Titer: 1:1562500; Positive Control: MCF7 cell lysate