

Product datasheet for **TA333386**

UTY Rabbit Polyclonal Antibody

Product data:

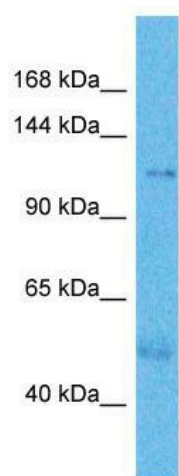
Product Type:	Primary Antibodies
Applications:	WB
Recommended Dilution:	WB
Reactivity:	Human
Host:	Rabbit
Isotype:	IgG
Clonality:	Polyclonal
Immunogen:	The immunogen for Anti-UTY Antibody is: synthetic peptide directed towards the N-terminal region of Human UTY. Synthetic peptide located within the following region: NLLLEDYSKALSAYQRYYSLQADYWKNAAFlyGLGLVYFYNAFHWAika
Formulation:	Liquid. Purified antibody supplied in 1x PBS buffer with 0.09% (w/v) sodium azide and 2% sucrose. <i>Note that this product is shipped as lyophilized powder to China customers.</i>
Purification:	Affinity Purified
Conjugation:	Unconjugated
Storage:	Store at -20°C as received.
Stability:	Stable for 12 months from date of receipt.
Predicted Protein Size:	118 kDa
Gene Name:	ubiquitously transcribed tetratricopeptide repeat containing, Y-linked
Database Link:	NP_872601 Entrez Gene 7404 Human O14607
Background:	This gene encodes a protein containing tetratricopeptide repeats which are thought to be involved in protein-protein interactions. This protein is a minor histocompatibility antigen which may induce graft rejection of male stem cell grafts. Alternative splicing results in multiple transcript variants encoding different isoforms.
Synonyms:	KDM6AL; UTY1
Note:	Immunogen sequence homology: Human: 100%



[View online »](#)

Protein Families: Transmembrane

Product images:



Host: Rabbit; Target Name: UTY; Sample Tissue: Thyroid Tumor lysates; Antibody Dilution: 1.0 ug/ml