

## Product datasheet for **TA333385**

### **LAT2 (SLC7A8) Rabbit Polyclonal Antibody**

#### **Product data:**

Product Type:	Primary Antibodies
Applications:	WB
Recommended Dilution:	WB
Reactivity:	Human
Host:	Rabbit
Isotype:	IgG
Clonality:	Polyclonal
Immunogen:	The immunogen for Anti-SLC7A8 Antibody: synthetic peptide directed towards the middle region of human SLC7A8. Synthetic peptide located within the following region: PRAIFISIPLVTFVYVFANVAVVTAMSPQELLASNAVAVTFGEKLLGVMA
Formulation:	Liquid. Purified antibody supplied in 1x PBS buffer with 0.09% (w/v) sodium azide and 2% sucrose. <i>Note that this product is shipped as lyophilized powder to China customers.</i>
Purification:	Affinity Purified
Conjugation:	Unconjugated
Storage:	Store at -20°C as received.
Stability:	Stable for 12 months from date of receipt.
Predicted Protein Size:	37 kDa
Gene Name:	solute carrier family 7 member 8
Database Link:	<a href="#">NP_877392</a> <a href="#">Entrez Gene 23428 Human</a> <a href="#">Q9UHI5</a>
Background:	SLC7A8 is sodium-independent, high-affinity transport of large neutral amino acids. It has higher affinity for L-phenylalanine than LAT1 but lower affinity for glutamine and serine. L-alanine is transported at physiological concentrations. SLC7A8 also plays a role in basolateral (re)absorption of neutral amino acids.
Synonyms:	LAT2; LPI-PC1

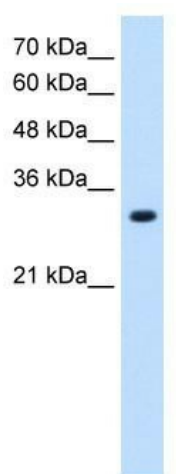


[View online »](#)

**Note:** Immunogen sequence homology: Pig: 100%; Rat: 100%; Horse: 100%; Human: 100%; Mouse: 100%; Bovine: 100%; Rabbit: 100%; Zebrafish: 100%; Guinea pig: 100%; Dog: 93%

**Protein Families:** Druggable Genome, Transmembrane

**Product images:**



WB Suggested Anti-SLC7A8 Antibody Titration:  
1.25 ug/ml; Positive Control: HepG2 cell lysate