

Product datasheet for **TA333384**

Phospholipase C beta 1 (PLCB1) Rabbit Polyclonal Antibody

Product data:

Product Type:	Primary Antibodies
Applications:	WB
Recommended Dilution:	WB
Reactivity:	Human, Mouse
Host:	Rabbit
Isotype:	IgG
Clonality:	Polyclonal
Immunogen:	The immunogen for Anti-PLCB1 Antibody: synthetic peptide directed towards the middle region of human PLCB1. Synthetic peptide located within the following region: EAQSKRQEKLVEKHKEIRQQILDEKPKGEGSSSFLSETCHEDPSVSPNFT
Formulation:	Liquid. Purified antibody supplied in 1x PBS buffer with 0.09% (w/v) sodium azide and 2% sucrose. <i>Note that this product is shipped as lyophilized powder to China customers.</i>
Purification:	Affinity Purified
Conjugation:	Unconjugated
Storage:	Store at -20°C as received.
Stability:	Stable for 12 months from date of receipt.
Predicted Protein Size:	134 kDa
Gene Name:	phospholipase C beta 1
Database Link:	NP_877398 Entrez Gene 18795 Mouse Entrez Gene 23236 Human Q9NQ66
Background:	The protein encoded by this gene catalyzes the formation of inositol 1,4,5-trisphosphate and diacylglycerol from phosphatidylinositol 4,5-bisphosphate. This reaction uses calcium as a cofactor and plays an important role in the intracellular transduction
Synonyms:	EIEE12; PI-PLC; PLC-154; PLC-I; PLC154; PLCB1A; PLCB1B
Note:	Immunogen sequence homology: Dog: 100%; Pig: 100%; Rat: 100%; Human: 100%; Mouse: 100%; Bovine: 100%; Guinea pig: 100%; Horse: 93%; Rabbit: 93%

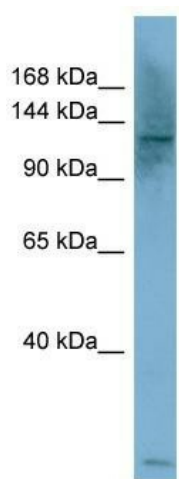


[View online »](#)

Protein Families: Druggable Genome

Protein Pathways: Alzheimer's disease, Calcium signaling pathway, Chemokine signaling pathway, Gap junction, GnRH signaling pathway, Huntington's disease, Inositol phosphate metabolism, Long-term depression, Long-term potentiation, Melanogenesis, Metabolic pathways, Phosphatidylinositol signaling system, Vascular smooth muscle contraction, Wnt signaling pathway

Product images:



WB Suggested Anti-PLCB1 Antibody Titration: 0.2-1 ug/ml; ELISA Titer: 1:312500; Positive Control: HepG2 cell lysate. There is BioGPS gene expression data showing that PLCB1 is expressed in HepG2.