

## Product datasheet for **TA333383**

### SPDYA Rabbit Polyclonal Antibody

#### Product data:

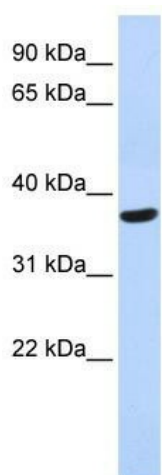
Product Type:	Primary Antibodies
Applications:	WB
Recommended Dilution:	WB
Reactivity:	Human
Host:	Rabbit
Isotype:	IgG
Clonality:	Polyclonal
Immunogen:	The immunogen for Anti-SPDYA Antibody: synthetic peptide directed towards the middle region of human SPDYA. Synthetic peptide located within the following region: HTAGVTEKHSQDSYNLSMDIIGDPSQAYTGSEVNDHQSNKGKKTNFLK
Formulation:	Liquid. Purified antibody supplied in 1x PBS buffer with 0.09% (w/v) sodium azide and 2% sucrose. <i>Note that this product is shipped as lyophilized powder to China customers.</i>
Purification:	Affinity Purified
Conjugation:	Unconjugated
Storage:	Store at -20°C as received.
Stability:	Stable for 12 months from date of receipt.
Predicted Protein Size:	36 kDa
Gene Name:	speedy/RINGO cell cycle regulator family member A
Database Link:	<a href="#">NP_877433</a> <a href="#">Entrez Gene 245711 Human</a> <a href="#">Q5MJ70</a>
Background:	SPDYA regulates the G1/S phase transition of the cell cycle by binding and activating CDC2, CDK2 and CDKN1B/KIP1. SPDYA can activate CDK2 without promoting CDK2 phosphorylation. SPDYA mediates cell survival during the DNA damage process through activation of CDK2.
Synonyms:	RINGO3; RINGOA; SPDY1; SPY1
Note:	Immunogen sequence homology: Human: 100%



[View online »](#)

Protein Pathways: Oocyte meiosis, Progesterone-mediated oocyte maturation

**Product images:**



WB Suggested Anti-SPDYA Antibody Titration: 0.2-1 ug/ml; ELISA Titer: 1:1562500; Positive Control: Human heart