

Product datasheet for **TA333382**

SPDYA Rabbit Polyclonal Antibody

Product data:

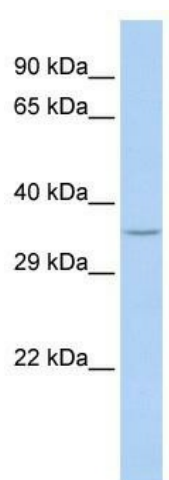
Product Type:	Primary Antibodies
Applications:	WB
Recommended Dilution:	WB
Reactivity:	Human
Host:	Rabbit
Isotype:	IgG
Clonality:	Polyclonal
Immunogen:	The immunogen for Anti-SPDYA Antibody: synthetic peptide directed towards the N terminal of human SPDYA. Synthetic peptide located within the following region: MRHNQMCCEPPTVTVYVKSGSNRSHQPKKPITLKRICKDNWQAFEKNT
Formulation:	Liquid. Purified antibody supplied in 1x PBS buffer with 0.09% (w/v) sodium azide and 2% sucrose. <i>Note that this product is shipped as lyophilized powder to China customers.</i>
Purification:	Affinity Purified
Conjugation:	Unconjugated
Storage:	Store at -20°C as received.
Stability:	Stable for 12 months from date of receipt.
Predicted Protein Size:	36 kDa
Gene Name:	speedy/RINGO cell cycle regulator family member A
Database Link:	NP_877433 Entrez Gene 245711 Human Q5MJ70
Background:	SPDYA regulates the G1/S phase transition of the cell cycle by binding and activating CDC2, CDK2 and CDKN1B/KIP1. SPDYA can activate CDK2 without promoting CDK2 phosphorylation. SPDYA mediates cell survival during the DNA damage process through activation of CDK2.
Synonyms:	RINGO3; RINGOA; SPDY1; SPY1
Note:	Immunogen sequence homology: Dog: 100%; Pig: 100%; Rat: 100%; Human: 100%; Bovine: 92%; Mouse: 85%; Rabbit: 85%



[View online »](#)

Protein Pathways: Oocyte meiosis, Progesterone-mediated oocyte maturation

Product images:



WB Suggested Anti-SPDYA Antibody Titration: 0.2-1 ug/ml; ELISA Titer: 1:62500; Positive Control: Hela cell lysate