

## Product datasheet for **TA333381**

### SLC6A15 Rabbit Polyclonal Antibody

#### Product data:

Product Type:	Primary Antibodies
Applications:	WB
Recommended Dilution:	WB
Reactivity:	Human
Host:	Rabbit
Isotype:	IgG
Clonality:	Polyclonal
Immunogen:	The immunogen for Anti-SLC6A15 Antibody: synthetic peptide directed towards the N terminal of human SLC6A15. Synthetic peptide located within the following region: DQCPLVKNASHTFVEPECEQSSATYYWYREALNISSSISESGGLNWKMT
Formulation:	Liquid. Purified antibody supplied in 1x PBS buffer with 0.09% (w/v) sodium azide and 2% sucrose. <i>Note that this product is shipped as lyophilized powder to China customers.</i>
Purification:	Affinity Purified
Conjugation:	Unconjugated
Storage:	Store at -20°C as received.
Stability:	Stable for 12 months from date of receipt.
Predicted Protein Size:	82 kDa
Gene Name:	solute carrier family 6 member 15
Database Link:	<a href="#">NP_877499</a> <a href="#">Entrez Gene 55117 Human</a> <a href="#">Q9H2J7</a>
Background:	SLC6A15 shows structural characteristics of an Na(+) and Cl(-)-dependent neurotransmitter transporter, including 12 transmembrane (TM) domains, intracellular N and C termini, and large extracellular loops containing multiple N-glycosylation sites.SLC6A15 shows structural characteristics of an Na(+) and Cl(-)-dependent neurotransmitter transporter, including 12 transmembrane (TM) domains, intracellular N and C termini, and large extracellular loops containing multiple N-glycosylation sites.



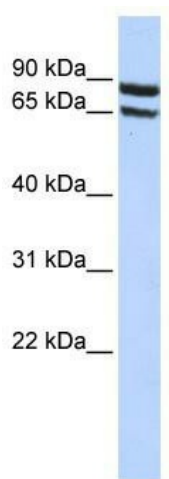
[View online »](#)

**Synonyms:** hv7-3; NTT73; SBAT1; V7-3

**Note:** Immunogen sequence homology: Dog: 100%; Horse: 100%; Human: 100%; Bovine: 100%; Rabbit: 100%; Mouse: 93%; Pig: 86%; Rat: 86%; Guinea pig: 86%

**Protein Families:** Druggable Genome, Transmembrane

**Product images:**



WB Suggested Anti-SLC6A15 Antibody Titration:  
0.2-1 ug/ml; ELISA Titer: 1:62500; Positive Control:  
HepG2 cell lysate