

Product datasheet for **TA333380**

Amigo2 Rabbit Polyclonal Antibody

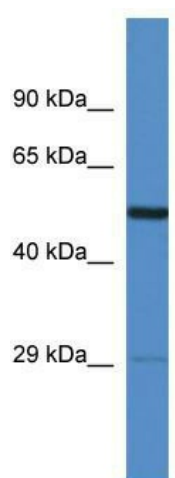
Product data:

| | |
|-------------------------|---|
| Product Type: | Primary Antibodies |
| Applications: | WB |
| Recommended Dilution: | WB |
| Reactivity: | Rat |
| Host: | Rabbit |
| Isotype: | IgG |
| Clonality: | Polyclonal |
| Immunogen: | The immunogen for Anti-Amigo2 Antibody: synthetic peptide corresponding to a region of Rat. Synthetic peptide located within the following region: FHALGFIHEAQVGERAIVHCDGKTGNGNTDFIWWGPDNRLLLEPKDTGNF |
| Formulation: | Liquid. Purified antibody supplied in 1x PBS buffer with 0.09% (w/v) sodium azide and 2% sucrose. <i>Note that this product is shipped as lyophilized powder to China customers.</i> |
| Purification: | Affinity Purified |
| Conjugation: | Unconjugated |
| Storage: | Store at -20°C as received. |
| Stability: | Stable for 12 months from date of receipt. |
| Predicted Protein Size: | 57 kDa |
| Gene Name: | adhesion molecule with Ig like domain 2 |
| Database Link: | NP_877968 Entrez Gene 300186 Rat Q7TNJ4 |
| Background: | Amigo2 is required for depolarization-dependent survival of cultured cerebellar granule neurons. It may mediate homophilic as well as heterophilic cell-cell interaction with AMIGO1 or AMIGO3. It also may contribute to signal transduction through its intracellular domain. |
| Synonyms: | ALI1; Alivin-1; AMIGO-2; DEGA |
| Note: | Immunogen sequence homology: Dog: 100%; Pig: 100%; Rat: 100%; Human: 100%; Mouse: 100%; Bovine: 100%; Horse: 93%; Guinea pig: 93%; Rabbit: 85% |



[View online »](#)

Product images:



WB Suggested Anti-Amigo2 Antibody; Titration:
1.0 ug/ml; Positive Control: Rat Heart