

Product datasheet for **TA333379**

RD3 Rabbit Polyclonal Antibody

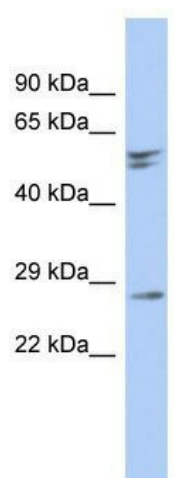
Product data:

Product Type:	Primary Antibodies
Applications:	WB
Recommended Dilution:	WB
Reactivity:	Human
Host:	Rabbit
Isotype:	IgG
Clonality:	Polyclonal
Immunogen:	The immunogen for Anti-RD3 Antibody: synthetic peptide directed towards the N terminal of human RD3. Synthetic peptide located within the following region: GQMREAERQQRERSNAVRKVCTGVDYSWLASTPRSTYDLSPIERLQLEDV
Formulation:	Liquid. Purified antibody supplied in 1x PBS buffer with 0.09% (w/v) sodium azide and 2% sucrose.
Purification:	Affinity Purified
Conjugation:	Unconjugated
Storage:	Store at -20°C as received.
Stability:	Stable for 12 months from date of receipt.
Predicted Protein Size:	23 kDa
Gene Name:	retinal degeneration 3
Database Link:	NP_898882 Entrez Gene 343035 Human Q7Z3Z2
Background:	RD3 is preferentially expressed in retina. Defects in RD3 are the cause of Leber congenital amaurosis type 12 (LCA12).
Synonyms:	C1orf36; LCA12
Note:	Immunogen sequence homology: Human: 100%; Dog: 79%



[View online »](#)

Product images:



WB Suggested Anti-RD3 Antibody Titration: 0.2-1 ug/ml; ELISA Titer: 1:1562500; Positive Control: Human brain