

## Product datasheet for **TA333378**

### ARRDC4 Rabbit Polyclonal Antibody

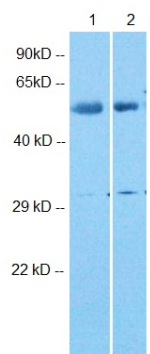
#### Product data:

Product Type:	Primary Antibodies
Applications:	WB
Recommended Dilution:	WB 1ug/ml
Reactivity:	Human
Host:	Rabbit
Isotype:	IgG
Clonality:	Polyclonal
Immunogen:	The immunogen for Anti-ARRDC4 Antibody is: synthetic peptide directed towards the C-terminal region of Human ARRDC4. Synthetic peptide located within the following region: PYPQPPNCEGEVCCPVFACIQEFRFQPPPLYSEVDPHPSDVEESQPVSFI
Formulation:	Liquid. Purified antibody supplied in 1x PBS buffer with 0.09% (w/v) sodium azide and 2% sucrose. <i>Note that this product is shipped as lyophilized powder to China customers.</i>
Purification:	Affinity Purified
Conjugation:	Unconjugated
Storage:	Store at -20°C as received.
Stability:	Stable for 12 months from date of receipt.
Predicted Protein Size:	45.5 kDa
Gene Name:	arrestin domain containing 4
Database Link:	<a href="#">NP_899232</a> <a href="#">Entrez Gene 91947 Human</a> <a href="#">Q8NCT1</a>
Background:	The function of this protein remains unknown.
Synonyms:	FLJ36045
Note:	Immunogen sequence homology: Dog: 100%; Pig: 100%; Horse: 100%; Human: 100%; Bovine: 100%; Mouse: 93%; Guinea pig: 93%; Rat: 79%; Rabbit: 79%; Zebrafish: 79%



[View online »](#)

## Product images:



Lane 1: human lung; Lane 2: human liver;  
Antibody Dilution: 1.0ug/ml