

Product datasheet for TA333376

GANC Rabbit Polyclonal Antibody

Product data:

Product Type:	Primary Antibodies
Applications:	WB
Recommended Dilution:	WB
Reactivity:	Human
Host:	Rabbit
Isotype:	IgG
Clonality:	Polyclonal
Immunogen:	The immunogen for Anti-GANC Antibody: synthetic peptide directed towards the middle region of human GANC. Synthetic peptide located within the following region: VLGFRKEPSSVTTHSSDGKDQPVAFTYCAKTSILSLEKLSLNIATDWEVR
Formulation:	Liquid. Purified antibody supplied in 1x PBS buffer with 0.09% (w/v) sodium azide and 2% sucrose. <i>Note that this product is shipped as lyophilized powder to China customers.</i>
Purification:	Affinity Purified
Conjugation:	Unconjugated
Storage:	Store at -20°C as received.
Stability:	Stable for 12 months from date of receipt.
Predicted Protein Size:	104 kDa
Gene Name:	glucosidase alpha, neutral C
Database Link:	NP_937784 Entrez Gene 2595 Human Q8TET4
Background:	GANC has alpha-glucosidase activity. Glycosyl hydrolase enzymes hydrolyse the glycosidic bond between two or more carbohydrates, or between a carbohydrate and a non-carbohydrate moiety. This gene encodes a member of glycosyl hydrolases family 31. This enzyme hydrolyses terminal, non-reducing 1,4-linked alpha-D-glucose residues and releases alpha-D-glucose. This is a key enzyme in glycogen metabolism and its gene localizes to a chromosomal region (15q15) that is associated with susceptibility to diabetes.



[View online »](#)

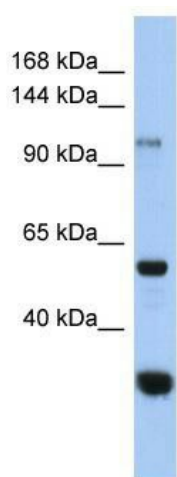
Synonyms: FLJ40082; MGC138256

Note: Immunogen sequence homology: Pig: 100%; Rat: 100%; Human: 100%; Rabbit: 100%; Guinea pig: 100%; Dog: 86%; Horse: 86%; Mouse: 79%

Protein Families: Druggable Genome

Protein Pathways: Galactose metabolism, Metabolic pathways, Starch and sucrose metabolism

Product images:



WB Suggested Anti-GANC Antibody Titration: 0.2-1 ug/ml; ELISA Titer: 1:312500; Positive Control: Hela cell lysate