

Product datasheet for **TA333374**

alpha Glucosidase II (GANAB) Rabbit Polyclonal Antibody

Product data:

Product Type:	Primary Antibodies
Applications:	WB
Recommended Dilution:	WB
Reactivity:	Human
Host:	Rabbit
Isotype:	IgG
Clonality:	Polyclonal
Immunogen:	The immunogen for Anti-GANAB Antibody: synthetic peptide directed towards the middle region of human GANAB. Synthetic peptide located within the following region: IIGAGKPAAVWLQTKGSPESRSLSFQHDPETSVLVRKPGINVASDWSIHL
Formulation:	Liquid. Purified antibody supplied in 1x PBS buffer with 0.09% (w/v) sodium azide and 2% sucrose. <i>Note that this product is shipped as lyophilized powder to China customers.</i>
Purification:	Affinity Purified
Conjugation:	Unconjugated
Storage:	Store at -20°C as received.
Stability:	Stable for 12 months from date of receipt.
Predicted Protein Size:	107 kDa
Gene Name:	glucosidase II alpha subunit
Database Link:	NP_938148 Entrez Gene 23193 Human Q14697
Background:	GANAB cleaves sequentially the 2 innermost alpha-1,3-linked glucose residues from the Glc2Man9GlcNAc2 oligosaccharide precursor of immature glycoproteins.
Synonyms:	G2AN; GIIA; GLUII; PKD3
Note:	Immunogen sequence homology: Pig: 100%; Rat: 100%; Human: 100%; Mouse: 100%; Bovine: 100%; Dog: 93%; Horse: 93%; Rabbit: 93%; Guinea pig: 91%

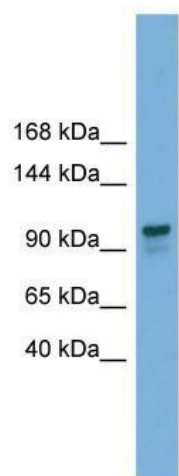


[View online »](#)

Protein Families: Druggable Genome, Transmembrane

Protein Pathways: Metabolic pathways, N-Glycan biosynthesis

Product images:



WB Suggested Anti-GANAB Antibody Titration:
0.2-1 ug/ml; ELISA Titer: 1:312500; Positive
Control: 721_B cell lysate GANAB is strongly
supported by BioGPS gene expression data to be
expressed in Human 721_B cells