

Product datasheet for **TA333370**

OLFML1 Rabbit Polyclonal Antibody

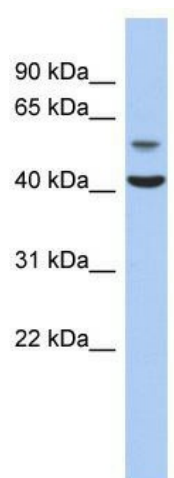
Product data:

Product Type:	Primary Antibodies
Applications:	WB
Recommended Dilution:	WB
Reactivity:	Human
Host:	Rabbit
Isotype:	IgG
Clonality:	Polyclonal
Immunogen:	The immunogen for Anti-OLFML1 Antibody: synthetic peptide directed towards the N terminal of human OLFML1. Synthetic peptide located within the following region: IYQRFVLEQGLEKCTQATRAYIQEFQFSKNISVMLGRCQTYTSEYKSA
Formulation:	Liquid. Purified antibody supplied in 1x PBS buffer with 0.09% (w/v) sodium azide and 2% sucrose.
Purification:	Affinity Purified
Conjugation:	Unconjugated
Storage:	Store at -20°C as received.
Stability:	Stable for 12 months from date of receipt.
Predicted Protein Size:	46 kDa
Gene Name:	olfactomedin like 1
Database Link:	NP_940876 Entrez Gene 283298 Human Q6UWY5
Background:	The specific function of this protein remains unknown.
Synonyms:	UNQ564
Note:	Immunogen sequence homology: Pig: 100%; Human: 100%; Rat: 93%; Horse: 93%; Mouse: 93%; Bovine: 93%; Dog: 86%; Rabbit: 86%; Guinea pig: 86%
Protein Families:	Secreted Protein



[View online »](#)

Product images:



WB Suggested Anti-OLFML1 Antibody Titration:
0.2-1 ug/ml; ELISA Titer: 1:1562500; Positive
Control: Human Muscle