

Product datasheet for **TA333366**

CIBAR2 Rabbit Polyclonal Antibody

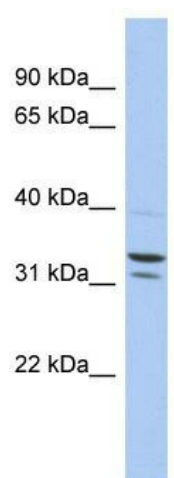
Product data:

Product Type:	Primary Antibodies
Applications:	WB
Recommended Dilution:	WB
Reactivity:	Human
Host:	Rabbit
Isotype:	IgG
Clonality:	Polyclonal
Immunogen:	The immunogen for Anti-FAM92B Antibody: synthetic peptide directed towards the N terminal of human FAM92B. Synthetic peptide located within the following region: FAEDLAKVQDYRQAQVERLETKVWNPLKLYGAQIKQTRAEIKKFKHVQNH
Formulation:	Liquid. Purified antibody supplied in 1x PBS buffer with 0.09% (w/v) sodium azide and 2% sucrose.
Purification:	Affinity Purified
Conjugation:	Unconjugated
Storage:	Store at -20°C as received.
Stability:	Stable for 12 months from date of receipt.
Predicted Protein Size:	35 kDa
Gene Name:	family with sequence similarity 92 member B
Database Link:	NP_940893 Entrez Gene 339145 Human Q6ZTR7
Background:	The specific function of this protein remains unknown.
Synonyms:	FLJ44299; MGC138149
Note:	Immunogen sequence homology: Pig: 100%; Rat: 100%; Horse: 100%; Human: 100%; Mouse: 100%; Bovine: 93%; Rabbit: 93%; Guinea pig: 93%; Dog: 86%



[View online »](#)

Product images:



WB Suggested Anti-FAM92B Antibody Titration:
0.2-1 ug/ml; ELISA Titer: 1:312500; Positive
Control: Hela cell lysate