

Product datasheet for TA333365

CLEC4G Rabbit Polyclonal Antibody

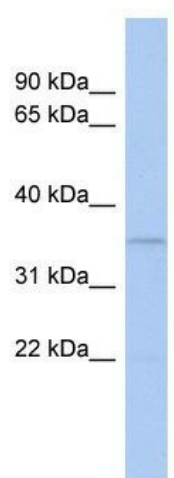
Product data:

Product Type:	Primary Antibodies
Applications:	WB
Recommended Dilution:	WB
Reactivity:	Human
Host:	Rabbit
Isotype:	IgG
Clonality:	Polyclonal
Immunogen:	The immunogen for Anti-CLEC4G Antibody: synthetic peptide directed towards the N terminal of human CLEC4G. Synthetic peptide located within the following region: RTNASKQTAALGALKEEVGDCHSCCSGTQAQLQTTRAELGEAQAKLMEQE
Formulation:	Liquid. Purified antibody supplied in 1x PBS buffer with 0.09% (w/v) sodium azide and 2% sucrose. <i>Note that this product is shipped as lyophilized powder to China customers.</i>
Purification:	Affinity Purified
Conjugation:	Unconjugated
Storage:	Store at -20°C as received.
Stability:	Stable for 12 months from date of receipt.
Predicted Protein Size:	32 kDa
Gene Name:	C-type lectin domain family 4 member G
Database Link:	NP_940894 Entrez Gene 339390 Human Q6UXB4
Background:	The specific function of this protein remains unknown.
Synonyms:	DTTR431; LP2698; LSEctin; UNQ431
Note:	Immunogen sequence homology: Human: 100%; Horse: 92%
Protein Families:	Druggable Genome, Transmembrane



[View online »](#)

Product images:



WB Suggested Anti-CLEC4G Antibody Titration:
0.2-1 ug/ml; ELISA Titer: 1:62500; Positive Control:
Human Placenta