

Product datasheet for **TA333364**

C11orf53 Rabbit Polyclonal Antibody

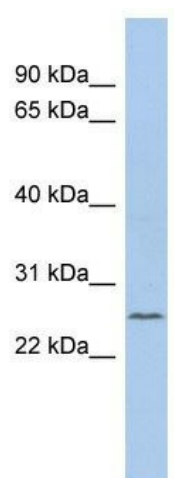
Product data:

| | |
|-------------------------|---|
| Product Type: | Primary Antibodies |
| Applications: | WB |
| Recommended Dilution: | WB |
| Reactivity: | Human |
| Host: | Rabbit |
| Isotype: | IgG |
| Clonality: | Polyclonal |
| Immunogen: | The immunogen for Anti-C11orf53 Antibody: synthetic peptide directed towards the middle region of human C11orf53. Synthetic peptide located within the following region: SIAQHRGSSWGSFLAGAQSLSLALEDLHHTPGYTPPPYPFTPFPMTVSN |
| Formulation: | Liquid. Purified antibody supplied in 1x PBS buffer with 0.09% (w/v) sodium azide and 2% sucrose. <i>Note that this product is shipped as lyophilized powder to China customers.</i> |
| Purification: | Affinity Purified |
| Conjugation: | Unconjugated |
| Storage: | Store at -20°C as received. |
| Stability: | Stable for 12 months from date of receipt. |
| Predicted Protein Size: | 25 kDa |
| Gene Name: | chromosome 11 open reading frame 53 |
| Database Link: | NP_940900 Entrez Gene 341032 Human Q8IXP5 |
| Background: | The specific function of this protein remains unknown. |
| Synonyms: | MGC50104 |
| Note: | Immunogen sequence homology: Rat: 100%; Human: 100%; Pig: 93%; Horse: 93%; Mouse: 93%; Guinea pig: 93%; Dog: 86%; Rabbit: 86%; Bovine: 79% |



[View online »](#)

Product images:



WB Suggested Anti-C11orf53 Antibody Titration:
0.2-1 ug/ml; ELISA Titer: 1:1562500; Positive
Control: Hela cell lysate