

Product datasheet for **TA333363**

LANCL3 Rabbit Polyclonal Antibody

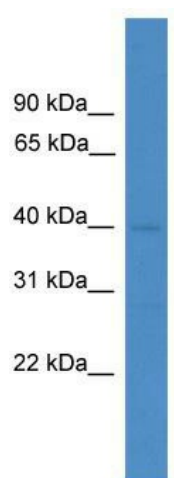
Product data:

Product Type:	Primary Antibodies
Applications:	WB
Recommended Dilution:	WB
Reactivity:	Human
Host:	Rabbit
Isotype:	IgG
Clonality:	Polyclonal
Immunogen:	The immunogen for Anti-LANCL3 Antibody: synthetic peptide directed towards the C terminal of human LANCL3. Synthetic peptide located within the following region: ICHGVAGSAYVFLLLYRLTGNSKYIYRAQSSFPVNLKMEHLLYTRQHCF
Formulation:	Liquid. Purified antibody supplied in 1x PBS buffer with 0.09% (w/v) sodium azide and 2% sucrose.
Purification:	Affinity Purified
Conjugation:	Unconjugated
Storage:	Store at -20°C as received.
Stability:	Stable for 12 months from date of receipt.
Predicted Protein Size:	43 kDa
Gene Name:	LanC like 3
Database Link:	NP_940913 Entrez Gene 347404 Human Q6ZV70
Background:	The function of LANCL3 remains unknown.
Synonyms:	FLJ42925
Note:	Immunogen sequence homology: Dog: 100%; Rat: 100%; Horse: 100%; Human: 100%; Mouse: 100%; Bovine: 100%; Rabbit: 100%; Goat: 77%



[View online »](#)

Product images:



WB Suggested Anti-LANCL3 Antibody Titration:
0.2-1 ug/ml; ELISA Titer: 1:312500; Positive
Control: ACHN cell lysate