

Product datasheet for **TA333362**

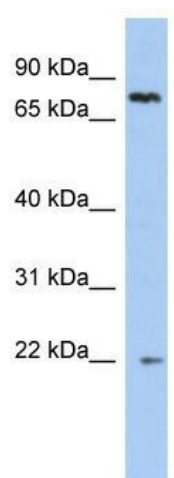
NHLRC2 Rabbit Polyclonal Antibody

Product data:

Product Type:	Primary Antibodies
Applications:	WB
Recommended Dilution:	WB
Reactivity:	Human
Host:	Rabbit
Isotype:	IgG
Clonality:	Polyclonal
Immunogen:	The immunogen for Anti-NHLRC2 Antibody: synthetic peptide directed towards the N terminal of human NHLRC2. Synthetic peptide located within the following region: YSDKDGLLIIGVHSAKFPNEKVLNLIKSAVLRYNITHPMVNDADASLWQE
Formulation:	Liquid. Purified antibody supplied in 1x PBS buffer with 0.09% (w/v) sodium azide and 2% sucrose. <i>Note that this product is shipped as lyophilized powder to China customers.</i>
Purification:	Affinity Purified
Conjugation:	Unconjugated
Storage:	Store at -20°C as received.
Stability:	Stable for 12 months from date of receipt.
Predicted Protein Size:	79 kDa
Gene Name:	NHL repeat containing 2
Database Link:	NP_940916 Entrez Gene 374354 Human Q8NBF2
Background:	The specific function of this protein remains unknown.
Synonyms:	DKFZp779F115; FLJ20147; FLJ25621; FLJ33312; MGC45492
Note:	Immunogen sequence homology: Dog: 100%; Pig: 100%; Rat: 100%; Horse: 100%; Human: 100%; Mouse: 100%; Bovine: 100%; Guinea pig: 100%; Zebrafish: 93%
Protein Families:	Druggable Genome



[View online »](#)

Product images:

WB Suggested Anti-NHLRC2 Antibody Titration:
0.2-1 ug/ml; ELISA Titer: 1:1562500; Positive
Control: 721_B cell lysate