

Product datasheet for **TA333356**

TEX9 Rabbit Polyclonal Antibody

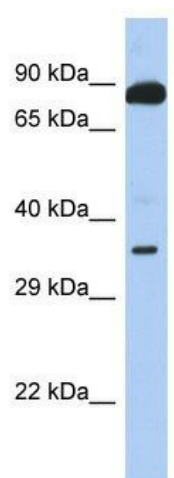
Product data:

Product Type:	Primary Antibodies
Applications:	WB
Recommended Dilution:	WB
Reactivity:	Human
Host:	Rabbit
Isotype:	IgG
Clonality:	Polyclonal
Immunogen:	The immunogen for Anti-TEX9 Antibody is: synthetic peptide directed towards the middle region of Human TEX9. Synthetic peptide located within the following region: VSNDIGTEAQIRFLKAKLHVMQEELDNVVCECNKKEDEIQNLKSQVKNFE
Formulation:	Liquid. Purified antibody supplied in 1x PBS buffer with 0.09% (w/v) sodium azide and 2% sucrose.
Purification:	Affinity Purified
Conjugation:	Unconjugated
Storage:	Store at -20°C as received.
Stability:	Stable for 12 months from date of receipt.
Predicted Protein Size:	34 kDa
Gene Name:	testis expressed 9
Database Link:	NP_940926 Entrez Gene 374618 Human Q8N6V9
Background:	The function of this protein remains unknown.
Synonyms:	MGC40181
Note:	Immunogen sequence homology: Rat: 100%; Horse: 100%; Human: 100%; Mouse: 100%; Bovine: 100%; Rabbit: 100%; Dog: 93%; Pig: 93%; Guinea pig: 93%; Zebrafish: 79%



[View online »](#)

Product images:



Host: Rabbit; Target Name: TEX9; Sample Tissue: 721_B Whole cell lysates; Antibody Dilution: 1.0 ug/ml