

## Product datasheet for **TA333355**

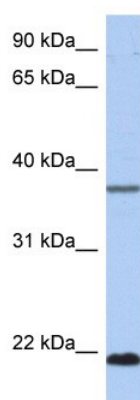
### HDDC3 Rabbit Polyclonal Antibody

#### Product data:

Product Type:	Primary Antibodies
Applications:	WB
Recommended Dilution:	WB
Reactivity:	Human
Host:	Rabbit
Isotype:	IgG
Clonality:	Polyclonal
Immunogen:	The immunogen for Anti-HDDC3 Antibody: synthetic peptide directed towards the middle region of human HDDC3. Synthetic peptide located within the following region: TDDKTLPKLERKRLQVEQAPHSSPGAKLVKLADKLYNLRDLNRCTPEVKI
Formulation:	Liquid. Purified antibody supplied in 1x PBS buffer with 0.09% (w/v) sodium azide and 2% sucrose. <i>Note that this product is shipped as lyophilized powder to China customers.</i>
Purification:	Affinity Purified
Conjugation:	Unconjugated
Storage:	Store at -20°C as received.
Stability:	Stable for 12 months from date of receipt.
Predicted Protein Size:	16 kDa
Gene Name:	HD domain containing 3
Database Link:	<a href="#">NP_940929</a> <a href="#">Entrez Gene 374659 Human</a> <a href="#">Q8N4P3</a>
Background:	The specific function of the protein remains unknown.
Synonyms:	(ppGpp)ase; MESH1
Note:	Immunogen sequence homology: Dog: 100%; Pig: 100%; Rat: 100%; Horse: 100%; Human: 100%; Mouse: 100%; Bovine: 100%; Zebrafish: 100%; Guinea pig: 100%; Rabbit: 93%



[View online »](#)

**Product images:**

WB suggested Anti-HDDC3 Antibody Titration:  
0.2-1 ug/mL; ELISA Titer: 1:312500; Positive  
Control: HeLa cell lysate