

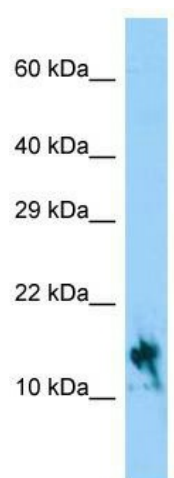
Product datasheet for TA333353

IGFL1 Rabbit Polyclonal Antibody

Product data:

Product Type:	Primary Antibodies
Applications:	WB
Recommended Dilution:	WB
Reactivity:	Human
Host:	Rabbit
Isotype:	IgG
Clonality:	Polyclonal
Immunogen:	The immunogen for Anti-IGFL1 Antibody is: synthetic peptide directed towards the C-terminal region of Human IGFL1. Synthetic peptide located within the following region: AVVPLARTQTCGNCTFRVCFEQCCPWTFMVKLINQNCDSARTSDDRLCRS
Formulation:	Liquid. Purified antibody supplied in 1x PBS buffer with 0.09% (w/v) sodium azide and 2% sucrose.
Purification:	Affinity Purified
Conjugation:	Unconjugated
Storage:	Store at -20°C as received.
Stability:	Stable for 12 months from date of receipt.
Predicted Protein Size:	12 kDa
Gene Name:	IGF like family member 1
Database Link:	NP_940943 Entrez Gene 374918 Human Q6UW32
Background:	IGFL1 belongs to the insulin-like growth factor family of signaling molecules that play critical roles in cellular energy metabolism and in growth and development, especially prenatal growth.
Synonyms:	APRG644; UNQ644
Note:	Immunogen sequence homology: Human: 100%
Protein Families:	Secreted Protein, Transmembrane


[View online »](#)

Product images:


Host: Rabbit; Target Name: IGFL1; Sample Tissue: HeLa Whole Cell lysates; Antibody Dilution: 1.0 ug/ml