

Product datasheet for **TA333352**

C3orf62 Rabbit Polyclonal Antibody

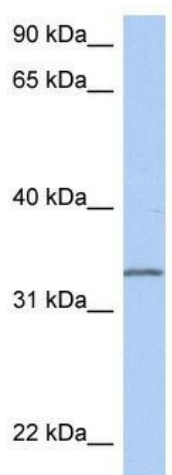
Product data:

Product Type:	Primary Antibodies
Applications:	WB
Recommended Dilution:	WB
Reactivity:	Human
Host:	Rabbit
Isotype:	IgG
Clonality:	Polyclonal
Immunogen:	The immunogen for Anti-C3orf62 Antibody: synthetic peptide directed towards the middle region of human C3orf62. Synthetic peptide located within the following region: IDHTSIRTIEELAGKIEFENELNHMCGHCQDSPFKEEAWALLMDKSPQKA
Formulation:	Liquid. Purified antibody supplied in 1x PBS buffer with 0.09% (w/v) sodium azide and 2% sucrose.
Purification:	Affinity Purified
Conjugation:	Unconjugated
Storage:	Store at -20°C as received.
Stability:	Stable for 12 months from date of receipt.
Predicted Protein Size:	30 kDa
Gene Name:	chromosome 3 open reading frame 62
Database Link:	NP_940964 Entrez Gene 375341 Human Q6ZUJ4
Background:	The specific function of the protein remains unknown.
Synonyms:	FLJ43654; MGC23381; MGC61663; MGC62079
Note:	Immunogen sequence homology: Dog: 100%; Pig: 100%; Rat: 100%; Horse: 100%; Human: 100%; Mouse: 100%; Bovine: 100%; Guinea pig: 100%



[View online »](#)

Product images:



WB Suggested Anti-C3orf62 Antibody Titration:
0.2-1 ug/ml; ELISA Titer: 1:62500; Positive Control:
MCF7 cell lysate