

Product datasheet for **TA333351**

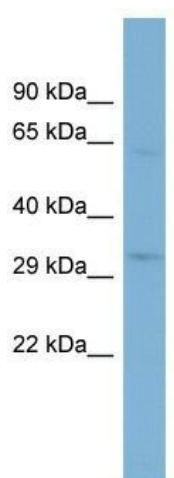
STIMATE Rabbit Polyclonal Antibody

Product data:

Product Type:	Primary Antibodies
Applications:	WB
Recommended Dilution:	WB
Reactivity:	Human
Host:	Rabbit
Isotype:	IgG
Clonality:	Polyclonal
Immunogen:	The immunogen for Anti-TMEM110 Antibody: synthetic peptide directed towards the N terminal of human TMEM110. Synthetic peptide located within the following region: MQGPAGNASRGLPGGPPSTVASGAGRCESGALMHSFGIFLQGLLGVVAFS
Formulation:	Liquid. Purified antibody supplied in 1x PBS buffer with 0.09% (w/v) sodium azide and 2% sucrose.
Purification:	Affinity Purified
Conjugation:	Unconjugated
Storage:	Store at -20°C as received.
Stability:	Stable for 12 months from date of receipt.
Predicted Protein Size:	33 kDa
Gene Name:	transmembrane protein 110
Database Link:	NP_940965 Entrez Gene 375346 Human Q86TL2
Background:	The function of this protein remains unknown.
Synonyms:	DKFZp667E1121; DKFZp779M0254; FLJ37613; FLJ42395; MGC52022
Note:	Immunogen sequence homology: Human: 100%; Rabbit: 100%; Rat: 86%
Protein Families:	Transmembrane



[View online »](#)

Product images:

WB Suggested Anti-TMEM110 Antibody Titration:
0.2-1 ug/ml; ELISA Titer: 1:312500; Positive
Control: 721_B cell lysate TMEM110 is supported
by BioGPS gene expression data to be expressed
in 721_B