

## Product datasheet for **TA333349**

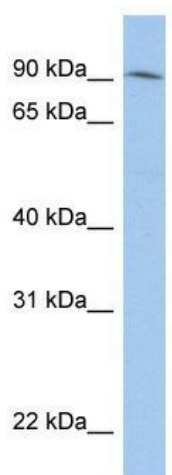
### LRR33 (NRROS) Rabbit Polyclonal Antibody

#### Product data:

Product Type:	Primary Antibodies
Applications:	WB
Recommended Dilution:	WB
Reactivity:	Human
Host:	Rabbit
Isotype:	IgG
Clonality:	Polyclonal
Immunogen:	The immunogen for Anti-NRROS Antibody: synthetic peptide directed towards the N terminal of human LRR33. Synthetic peptide located within the following region: GLERLRELDLQRNYIFEIEGGAFDGLAELRHLNLAFFNNLPCIVDFGLTRL
Formulation:	Liquid. Purified antibody supplied in 1x PBS buffer with 0.09% (w/v) sodium azide and 2% sucrose.
Purification:	Affinity Purified
Conjugation:	Unconjugated
Storage:	Store at -20°C as received.
Stability:	Stable for 12 months from date of receipt.
Predicted Protein Size:	76 kDa
Gene Name:	negative regulator of reactive oxygen species
Database Link:	<a href="#">NP_940967</a> <a href="#">Entrez Gene 375387 Human</a> <a href="#">Q86YC3</a>
Background:	The specific function of the protein remains unknown.
Synonyms:	ELLP3030; GARPL1; LRR33; UNQ3030
Note:	Immunogen sequence homology: Pig: 100%; Rat: 100%; Horse: 100%; Human: 100%; Mouse: 100%; Bovine: 100%; Rabbit: 100%; Guinea pig: 100%; Dog: 93%
Protein Families:	Transmembrane



[View online »](#)

**Product images:**

WB Suggested Anti-LRRC33 Antibody Titration:  
0.2-1 ug/ml; ELISA Titer: 1:62500; Positive Control:  
PANC1 cell lysate