

Product datasheet for **TA333348**

SPATC1 Rabbit Polyclonal Antibody

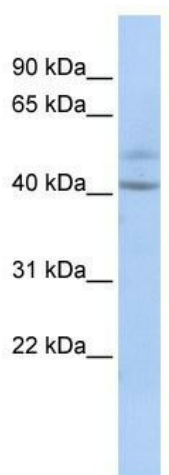
Product data:

Product Type:	Primary Antibodies
Applications:	WB
Recommended Dilution:	WB
Reactivity:	Human
Host:	Rabbit
Isotype:	IgG
Clonality:	Polyclonal
Immunogen:	The immunogen for Anti-SPATC1 Antibody: synthetic peptide directed towards the middle region of human SPATC1. Synthetic peptide located within the following region: QSSPLIAPVMGTVAVSLSSPLLSSTATPPGVSQNLLANPMSNLVLP EAPR
Formulation:	Liquid. Purified antibody supplied in 1x PBS buffer with 0.09% (w/v) sodium azide and 2% sucrose. <i>Note that this product is shipped as lyophilized powder to China customers.</i>
Purification:	Affinity Purified
Conjugation:	Unconjugated
Storage:	Store at -20°C as received.
Stability:	Stable for 12 months from date of receipt.
Predicted Protein Size:	52 kDa
Gene Name:	spermatogenesis and centriole associated 1
Database Link:	NP_940974 Entrez Gene 375686 Human Q76KD6
Background:	The specific function of SPATC1 is not yet known.
Synonyms:	SPATA15
Note:	Immunogen sequence homology: Human: 100%; Mouse: 100%; Rabbit: 100%; Pig: 92%; Rat: 92%; Guinea pig: 92%; Dog: 85%



[View online »](#)

Product images:



WB Suggested Anti-SPATC1 Antibody Titration:
0.2-1 ug/ml; ELISA Titer: 1:1562500; Positive
Control: HepG2 cell lysate