

Product datasheet for **TA333347**

RAB15 Rabbit Polyclonal Antibody

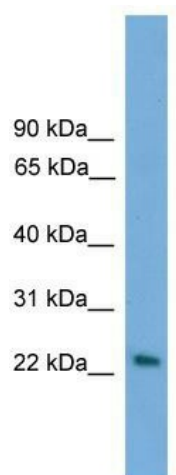
Product data:

Product Type:	Primary Antibodies
Applications:	WB
Recommended Dilution:	WB
Reactivity:	Human
Host:	Rabbit
Isotype:	IgG
Clonality:	Polyclonal
Immunogen:	The immunogen for Anti-RAB15 Antibody: synthetic peptide directed towards the middle region of human RAB15. Synthetic peptide located within the following region: QTITKQYYRRAQGIFLVYDISSERSYQHIMKWVSDVDEVDATSLPGCGE
Formulation:	Liquid. Purified antibody supplied in 1x PBS buffer with 0.09% (w/v) sodium azide and 2% sucrose. <i>Note that this product is shipped as lyophilized powder to China customers.</i>
Purification:	Affinity Purified
Conjugation:	Unconjugated
Storage:	Store at -20°C as received.
Stability:	Stable for 12 months from date of receipt.
Predicted Protein Size:	23 kDa
Gene Name:	RAB15, member RAS oncogene family
Database Link:	NP_941959 Entrez Gene 376267 Human P59190
Background:	RAB15 may act in concert with RAB3A in regulating aspects of synaptic vesicle membrane flow within the nerve terminal.
Synonyms:	member RAS oncogene family; member RAS oncogene family; RAB15; Ras-related protein Rab-15
Note:	Immunogen sequence homology: Dog: 100%; Pig: 100%; Rat: 100%; Horse: 100%; Human: 100%; Mouse: 100%; Bovine: 100%; Rabbit: 100%; Guinea pig: 100%; Zebrafish: 86%



[View online »](#)

Product images:



WB Suggested Anti-RAB15 Antibody Titration: 0.2-1 ug/ml; ELISA Titer: 1:1562500; Positive Control: Human Placenta