

## Product datasheet for **TA333345**

### AMIGO3 Rabbit Polyclonal Antibody

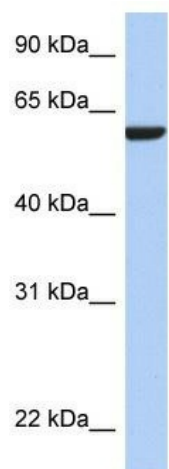
#### Product data:

Product Type:	Primary Antibodies
Applications:	WB
Recommended Dilution:	WB
Reactivity:	Human
Host:	Rabbit
Isotype:	IgG
Clonality:	Polyclonal
Immunogen:	The immunogen for Anti-AMIGO3 Antibody: synthetic peptide directed towards the N terminal of human AMIGO3. Synthetic peptide located within the following region: MTWLVLGTLMLRVGLGTPDSEGFPPRALHNCYPKICAAADLLSCTGL
Formulation:	Liquid. Purified antibody supplied in 1x PBS buffer with 0.09% (w/v) sodium azide and 2% sucrose.
Purification:	Affinity Purified
Conjugation:	Unconjugated
Storage:	Store at -20°C as received.
Stability:	Stable for 12 months from date of receipt.
Predicted Protein Size:	55 kDa
Gene Name:	adhesion molecule with Ig-like domain 3
Database Link:	<a href="#">NP_942015</a> <a href="#">Entrez Gene 386724 Human</a> <a href="#">Q86WK7</a>
Background:	AMIGO3 may mediate heterophilic cell-cell interaction. AMIGO3 may contribute to signal transduction through its intracellular domain.
Synonyms:	AL13; AMIGO-3
Note:	Immunogen sequence homology: Human: 100%; Pig: 79%; Guinea pig: 79%
Protein Families:	Transmembrane



[View online »](#)

## Product images:



WB Suggested Anti-AMIGO3 Antibody Titration:  
0.2-1 ug/ml; ELISA Titer: 1:312500; Positive  
Control: MCF7 cell lysate