

Product datasheet for **TA333341**

NAPE PLD (NAPEPLD) Rabbit Polyclonal Antibody

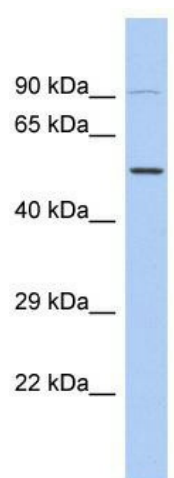
Product data:

Product Type:	Primary Antibodies
Applications:	WB
Recommended Dilution:	WB
Reactivity:	Human
Host:	Rabbit
Isotype:	IgG
Clonality:	Polyclonal
Immunogen:	The immunogen for Anti-NAPEPLD Antibody is: synthetic peptide directed towards the C-terminal region of HUMAN NAPEPLD. Synthetic peptide located within the following region: AFEEIGKRFGPFDLAAIPIGAYEPRWFMKYQHVDPEEAVRIHTDVQTKKS
Formulation:	Liquid. Purified antibody supplied in 1x PBS buffer with 0.09% (w/v) sodium azide and 2% sucrose. <i>Note that this product is shipped as lyophilized powder to China customers.</i>
Purification:	Affinity Purified
Conjugation:	Unconjugated
Storage:	Store at -20°C as received.
Stability:	Stable for 12 months from date of receipt.
Predicted Protein Size:	51 kDa
Gene Name:	N-acyl phosphatidylethanolamine phospholipase D
Database Link:	NP_945341 Entrez Gene 222236 Human Q6IQ20
Background:	The function of this protein remains unknown.
Synonyms:	FMP30; NAPE-PLD
Note:	Immunogen sequence homology: Pig: 100%; Rat: 100%; Human: 100%; Mouse: 100%; Bovine: 100%; Rabbit: 100%; Guinea pig: 100%; Dog: 93%; Horse: 93%; Zebrafish: 85%



[View online »](#)

Product images:



Host: Rabbit; Target Name: NAPEPLD; Sample
Tissue: HCT116 Whole Cell lysates; Antibody
Dilution: 1.0 ug/ml