

## Product datasheet for **TA333339**

### **MNK2 (MKNK2) Rabbit Polyclonal Antibody**

#### **Product data:**

|                                |   |
|--------------------------------|---|
| <b>Product Type:</b>           | Primary Antibodies  |
| <b>Applications:</b>           | IHC, WB   |
| <b>Recommended Dilution:</b>   | WB, IHC   |
| <b>Reactivity:</b>             | Human   |
| <b>Host:</b>                   | Rabbit  |
| <b>Isotype:</b>                | IgG   |
| <b>Clonality:</b>              | Polyclonal  |
| <b>Immunogen:</b>              | The immunogen for Anti-MKNK2 Antibody: synthetic peptide directed towards the N terminal of human MKNK2. Synthetic peptide located within the following region:<br>SDFGLQCSARPDMPASQPIDIPDAKKRGKKKKRGRATDSFSGRFEDVYQL                   |
| <b>Formulation:</b>            | Liquid. Purified antibody supplied in 1x PBS buffer with 0.09% (w/v) sodium azide and 2% sucrose.<br><i>Note that this product is shipped as lyophilized powder to China customers.</i>   |
| <b>Purification:</b>           | Affinity Purified   |
| <b>Conjugation:</b>            | Unconjugated  |
| <b>Storage:</b>                | Store at -20°C as received.   |
| <b>Stability:</b>              | Stable for 12 months from date of receipt.  |
| <b>Predicted Protein Size:</b> | 51 kDa  |
| <b>Gene Name:</b>              | MAP kinase interacting serine/threonine kinase 2  |
| <b>Database Link:</b>          | <a href="#">NP_951009</a><br><a href="#">Entrez Gene 2872 Human</a><br><a href="#">Q9HBH9</a>   |
| <b>Background:</b>             | MKNK2 may play a role in the response to environmental stress and cytokines. It appears to regulate transcription by phosphorylating EIF4E, thus increasing the affinity of this protein for the 7-methylguanosine-containing mRNA cap. |
| <b>Synonyms:</b>               | GPRK7; MNK2   |
| <b>Note:</b>                   | Immunogen sequence homology: Dog: 100%; Pig: 100%; Rat: 100%; Horse: 100%; Human: 100%; Mouse: 100%; Zebrafish: 100%; Guinea pig: 100%; Bovine: 92%; Rabbit: 77%  |



[View online »](#)

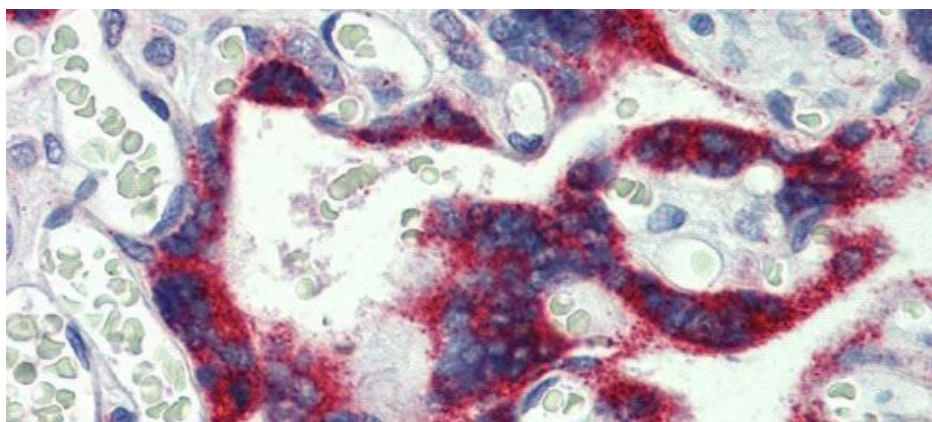
**Protein Families:** Druggable Genome, Protein Kinase

**Protein Pathways:** Insulin signaling pathway, MAPK signaling pathway

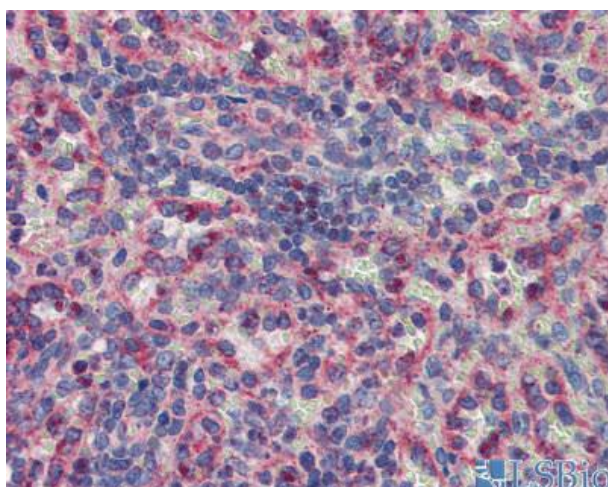
**Product images:**



WB Suggested Anti-MKNK2 Antibody Titration: 1 ug/ml; Positive Control: 721\_B cell lysate MKNK2 is supported by BioGPS gene expression data to be expressed in 721\_B



Immunohistochemistry with Human Placenta lysate tissue at an antibody concentration of 5.0 ug/ml using anti-MKNK2 antibody



Human Spleen