

## Product datasheet for **TA333338**

### ADPRHL1 Rabbit Polyclonal Antibody

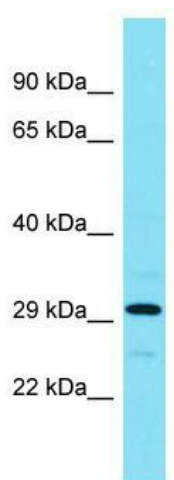
#### Product data:

Product Type:	Primary Antibodies
Applications:	WB
Recommended Dilution:	WB
Reactivity:	Human
Host:	Rabbit
Isotype:	IgG
Clonality:	Polyclonal
Immunogen:	The immunogen for Anti-ADPRHL1 Antibody is: synthetic peptide directed towards the middle region of Human ADPRHL1. Synthetic peptide located within the following region: LAEEYCRKTIRHTAEYQEHWFYFEAKWQFYLEERKISKDSENKAIFPDNY
Formulation:	Liquid. Purified antibody supplied in 1x PBS buffer with 0.09% (w/v) sodium azide and 2% sucrose. <i>Note that this product is shipped as lyophilized powder to China customers.</i>
Purification:	Affinity Purified
Conjugation:	Unconjugated
Storage:	Store at -20°C as received.
Stability:	Stable for 12 months from date of receipt.
Predicted Protein Size:	30 kDa
Gene Name:	ADP-ribosylhydrolase like 1
Database Link:	<a href="#">NP_954631</a> <a href="#">Entrez Gene 113622 Human</a> <a href="#">Q8NDY3</a>
Background:	ADP-ribosylation is a reversible posttranslational modification used to regulate protein function. ADP-ribosyltransferases (see ART1; MIM 601625) transfer ADP-ribose from NAD <sup>+</sup> to the target protein, and ADP-ribosylhydrolases, such as ADPRHL1, reverse the reaction.
Synonyms:	ARH2
Note:	Immunogen sequence homology: Human: 100%; Pig: 93%; Guinea pig: 93%; Rabbit: 86%; Rat: 79%



[View online »](#)

## Product images:



Host: Rabbit; Target Name: ADPRHL1; Sample  
Tissue: RPMI-8226 Whole Cell lysates; Antibody  
Dilution: 1.0 ug/ml.