

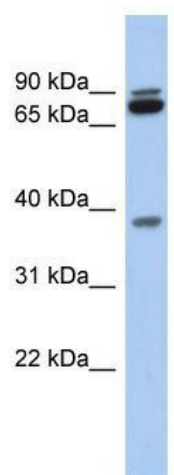
Product datasheet for **TA333337**

PRR19 Rabbit Polyclonal Antibody

Product data:

Product Type:	Primary Antibodies
Applications:	WB
Recommended Dilution:	WB
Reactivity:	Human
Host:	Rabbit
Isotype:	IgG
Clonality:	Polyclonal
Immunogen:	The immunogen for Anti-MGC70924 Antibody: synthetic peptide directed towards the middle region of human MGC70924. Synthetic peptide located within the following region: SPSPGRAQEPAPRSRDKENQVPGGSGPGPPSSPELSGVGQLLAELQCQLS
Formulation:	Liquid. Purified antibody supplied in 1x PBS buffer with 0.09% (w/v) sodium azide and 2% sucrose.
Purification:	Affinity Purified
Conjugation:	Unconjugated
Storage:	Store at -20°C as received.
Stability:	Stable for 12 months from date of receipt.
Predicted Protein Size:	39 kDa
Gene Name:	proline rich 19
Database Link:	NP_954979 Entrez Gene 284338 Human A6NJB7
Background:	The specific function of the protein remains unknown.
Synonyms:	MGC70924
Note:	Immunogen sequence homology: Human: 100%; Horse: 79%; Rat: 77%


[View online »](#)

Product images:

WB Suggested Anti-MGC70924 Antibody Titration:
0.2-1 ug/ml; ELISA Titer: 1:1562500; Positive
Control: Human heart