

## Product datasheet for **TA333335**

### SPEM1 Rabbit Polyclonal Antibody

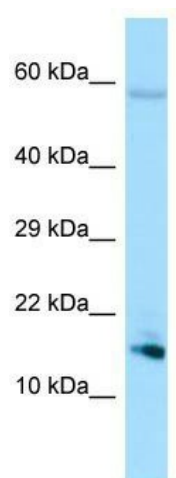
#### Product data:

Product Type:	Primary Antibodies
Applications:	WB
Recommended Dilution:	WB
Reactivity:	Human
Host:	Rabbit
Isotype:	IgG
Clonality:	Polyclonal
Immunogen:	The immunogen for Anti-SPEM1 Antibody is: synthetic peptide directed towards the N-terminal region of Human SPEM1. Synthetic peptide located within the following region: KSSLRKQTQPPKKQSSPAVHLRCTMDPVMMTVSPPPAHRHRRRGSPTRC
Formulation:	Liquid. Purified antibody supplied in 1x PBS buffer with 0.09% (w/v) sodium azide and 2% sucrose. <i>Note that this product is shipped as lyophilized powder to China customers.</i>
Purification:	Affinity Purified
Conjugation:	Unconjugated
Storage:	Store at -20°C as received.
Stability:	Stable for 12 months from date of receipt.
Predicted Protein Size:	19 kDa
Gene Name:	spermatid maturation 1
Database Link:	<a href="#">NP_955371</a> <a href="#">Entrez Gene 374768 Human</a> <a href="#">Q8N4L4</a>
Background:	The function of this protein remains unknown.
Synonyms:	C17orf83
Note:	Immunogen sequence homology: Human: 100%
Protein Families:	Transmembrane



[View online »](#)

## Product images:



WB Suggested Anti-SPEM1 Antibody; Titration: 1.0 ug/ml; Positive Control: Jurkat Whole Cell