

Product datasheet for **TA333334**

C10orf71 Rabbit Polyclonal Antibody

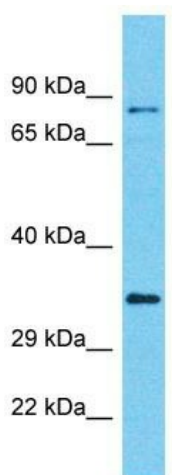
Product data:

Product Type:	Primary Antibodies
Applications:	WB
Recommended Dilution:	WB
Reactivity:	Human
Host:	Rabbit
Isotype:	IgG
Clonality:	Polyclonal
Immunogen:	The immunogen for Anti-C10orf71 Antibody is: synthetic peptide directed towards the C-terminal region of Human C10orf71. Synthetic peptide located within the following region: AERSSYENKEVEGELEMGPAGSSWCPDSREHRPRKHLSRLCNRDPEPGG
Formulation:	Liquid. Purified antibody supplied in 1x PBS buffer with 0.09% (w/v) sodium azide and 2% sucrose. <i>Note that this product is shipped as lyophilized powder to China customers.</i>
Purification:	Affinity Purified
Conjugation:	Unconjugated
Storage:	Store at -20°C as received.
Stability:	Stable for 12 months from date of receipt.
Predicted Protein Size:	79 kDa
Gene Name:	chromosome 10 open reading frame 71
Database Link:	NP_955629 Entrez Gene 118461 Human Q711Q0
Background:	The function of this protein remains unknown.
Synonyms:	FLJ45913
Note:	Immunogen sequence homology: Human: 100%



[View online »](#)

Product images:



Host: Rabbit

Target Name: C10orf71

Sample Tissue: HCT15 Cell Lysate

Antibody Dilution: 1.0 µg/ml

Host: Rabbit; Target Name: C10orf71; Sample
Tissue: HCT15 Whole cell lysates; Antibody
Dilution: 1.0 ug/ml.