

Product datasheet for TA333331

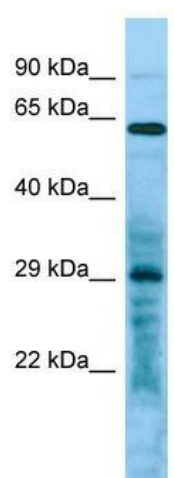
LRRC10 Rabbit Polyclonal Antibody

Product data:

Product Type:	Primary Antibodies
Applications:	WB
Recommended Dilution:	WB
Reactivity:	Human
Host:	Rabbit
Isotype:	IgG
Clonality:	Polyclonal
Immunogen:	The immunogen for Anti-LRRC10 Antibody is: synthetic peptide directed towards the C-terminal region of Human LRRC10. Synthetic peptide located within the following region: SSLKLVIYDHNPCRNAPKVAKGVRRVGRWAEETPEPDPRKARRYALVREE
Formulation:	Liquid. Purified antibody supplied in 1x PBS buffer with 0.09% (w/v) sodium azide and 2% sucrose.
Purification:	Affinity Purified
Conjugation:	Unconjugated
Storage:	Store at -20°C as received.
Stability:	Stable for 12 months from date of receipt.
Predicted Protein Size:	30 kDa
Gene Name:	leucine rich repeat containing 10
Database Link:	NP_963844 Entrez Gene 376132 Human Q5BKY1
Background:	LRRC10 may play important roles in cardiac development and/or cardiac function.
Synonyms:	HRLRRP; LRRC10A
Note:	Immunogen sequence homology: Dog: 100%; Human: 100%; Mouse: 100%; Bovine: 100%; Rabbit: 100%; Pig: 93%; Guinea pig: 93%; Rat: 86%


[View online »](#)

Product images:



Host: Rabbit; Target Name: LRRC10; Sample
Tissue: HeLa Whole Cell lysates; Antibody Dilution:
1.0 ug/ml