

Product datasheet for **TA333329**

CD32 (FCGR2C) Rabbit Polyclonal Antibody

Product data:

Product Type:	Primary Antibodies
Applications:	WB
Recommended Dilution:	WB
Reactivity:	Human
Host:	Rabbit
Isotype:	IgG
Clonality:	Polyclonal
Immunogen:	The immunogen for Anti-FCGR2C Antibody is: synthetic peptide directed towards the N-terminal region of Human FCGR2C. Synthetic peptide located within the following region: GTHSPESDSIPWFHNGNLIPTHTQPSYRFKANNNDSGEYTCQTGQTSLS
Formulation:	Liquid. Purified antibody supplied in 1x PBS buffer with 0.09% (w/v) sodium azide and 2% sucrose. <i>Note that this product is shipped as lyophilized powder to China customers.</i>
Purification:	Affinity Purified
Conjugation:	Unconjugated
Storage:	Store at -20°C as received.
Stability:	Stable for 12 months from date of receipt.
Predicted Protein Size:	35 kDa
Gene Name:	Fc fragment of IgG receptor IIc (gene/pseudogene)
Database Link:	NP_963857 Entrez Gene 9103 Human P31995
Background:	This gene encodes one of three members of a family of low-affinity immunoglobulin gamma Fc receptors found on the surface of many immune response cells. The encoded protein is a transmembrane glycoprotein and may be involved in phagocytosis and clearing of immune complexes. An allelic polymorphism in this gene results in both coding and non-coding variants.
Synonyms:	CD32; CD32C; CDW32; FCG2; FCRIIC; IGFR2



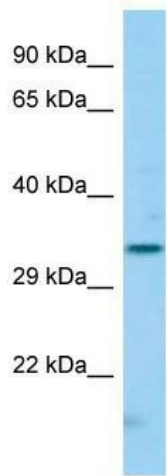
[View online »](#)

Note: Immunogen sequence homology: Pig: 100%; Human: 100%; Guinea pig: 100%; Horse: 91%; Rabbit: 91%; Bovine: 90%

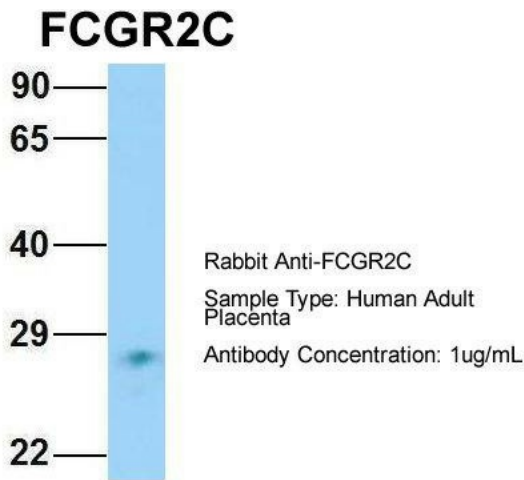
Protein Families: ES Cell Differentiation/IPS, Transmembrane

Protein Pathways: Fc gamma R-mediated phagocytosis, Systemic lupus erythematosus

Product images:



Host: Rabbit; Target Name: FCGR2C; Sample Tissue: HeLa Whole cell lysates; Antibody Dilution: 1.0 ug/ml



Host: Rabbit; Target Name: FCGR2C; Sample Tissue: Human Adult Placenta; Antibody Dilution: 1.0 ug/ml