

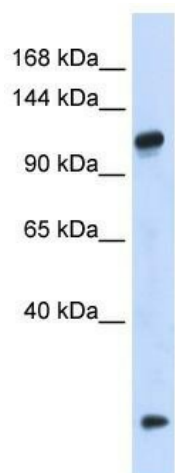
## Product datasheet for TA333325

### HEATR4 Rabbit Polyclonal Antibody

#### Product data:

Product Type:	Primary Antibodies
Applications:	WB
Recommended Dilution:	WB
Reactivity:	Human
Host:	Rabbit
Isotype:	IgG
Clonality:	Polyclonal
Immunogen:	The immunogen for Anti-HEATR4 Antibody: synthetic peptide directed towards the N terminal of human HEATR4. Synthetic peptide located within the following region: VFFSSQYRLHRKSQYLKMAAANLTFSQEVVWQRLPSIPYSQYSFDHLYN
Formulation:	Liquid. Purified antibody supplied in 1x PBS buffer with 0.09% (w/v) sodium azide and 2% sucrose.
Purification:	Affinity Purified
Conjugation:	Unconjugated
Storage:	Store at -20°C as received.
Stability:	Stable for 12 months from date of receipt.
Predicted Protein Size:	112 kDa
Gene Name:	HEAT repeat containing 4
Database Link:	<a href="#">NP_976054</a> <a href="#">Entrez Gene 399671 Human</a> <a href="#">Q86WZ0</a>
Background:	The function of the HEATR4 protein remains unknown.
Synonyms:	MGC48595
Note:	Immunogen sequence homology: Human: 100%


[View online »](#)

**Product images:**

WB Suggested Anti-HEATR4 Antibody Titration:  
0.2-1 ug/ml; ELISA Titer: 1:312500; Positive  
Control: 293T cell lysate