

Product datasheet for TA333323

Glycerol kinase (GK) Rabbit Polyclonal Antibody

Product data:

| | |
|-------------------------|--|
| Product Type: | Primary Antibodies |
| Applications: | WB |
| Recommended Dilution: | WB |
| Reactivity: | Human |
| Host: | Rabbit |
| Isotype: | IgG |
| Clonality: | Polyclonal |
| Immunogen: | The immunogen for Anti-GK Antibody: synthetic peptide directed towards the middle region of human GK. Synthetic peptide located within the following region: MAAGAAEGVGVWSLEPEDLSAVTMERFEPQINAESEIRYSTWKKAVMKS |
| Formulation: | Liquid. Purified antibody supplied in 1x PBS buffer with 0.09% (w/v) sodium azide and 2% sucrose. <i>Note that this product is shipped as lyophilized powder to China customers.</i> |
| Purification: | Affinity Purified |
| Conjugation: | Unconjugated |
| Storage: | Store at -20°C as received. |
| Stability: | Stable for 12 months from date of receipt. |
| Predicted Protein Size: | 58 kDa |
| Gene Name: | glycerol kinase |
| Database Link: | NP_976325 Entrez Gene 2710 Human P32189 |
| Background: | The product of this gene belongs to the FGGY kinase family of proteins and encodes glycerol kinase. Glycerol kinase is a key enzyme in the regulation of glycerol uptake and metabolism. It catalyzes the phosphorylation of glycerol by ATP, yielding ADP and glycerol-3-phosphate. Defects in this gene are the cause of glycerol kinase deficiency (GKD). Alternatively spliced transcript variants encoding different isoforms have been identified. |
| Synonyms: | GK1; GKD |



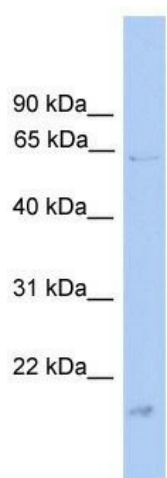
[View online »](#)

Note: Immunogen sequence homology: Dog: 100%; Pig: 100%; Rat: 100%; Horse: 100%; Human: 100%; Mouse: 100%; Bovine: 100%; Rabbit: 100%; Guinea pig: 100%; Zebrafish: 85%

Protein Families: Druggable Genome

Protein Pathways: Glycerolipid metabolism, Metabolic pathways, PPAR signaling pathway

Product images:



WB Suggested Anti-GK Antibody Titration: 0.2-1 ug/ml; ELISA Titer: 1:1562500; Positive Control: U937 cell lysate