

## Product datasheet for TA333322

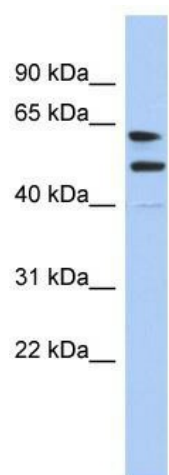
### EZHIP Rabbit Polyclonal Antibody

#### Product data:

Product Type:	Primary Antibodies
Applications:	WB
Recommended Dilution:	WB
Reactivity:	Human
Host:	Rabbit
Isotype:	IgG
Clonality:	Polyclonal
Immunogen:	The immunogen for Anti-CXorf67 Antibody: synthetic peptide directed towards the middle region of human LOC340602. Synthetic peptide located within the following region: SSYASNSSSPSRSPGLSPSSPSPEFLGLRSISTPSPELRYALMPEFYAL
Formulation:	Liquid. Purified antibody supplied in 1x PBS buffer with 0.09% (w/v) sodium azide and 2% sucrose. <i>Note that this product is shipped as lyophilized powder to China customers.</i>
Purification:	Affinity Purified
Conjugation:	Unconjugated
Storage:	Store at -20°C as received.
Stability:	Stable for 12 months from date of receipt.
Predicted Protein Size:	52 kDa
Gene Name:	chromosome X open reading frame 67
Database Link:	<a href="#">NP_981952</a> <a href="#">Entrez Gene 340602 Human</a> <a href="#">Q86X51</a>
Background:	The specific function of the protein remains unknown.
Synonyms:	MGC47837
Note:	Immunogen sequence homology: Human: 100%; Dog: 91%; Mouse: 83%



[View online »](#)

**Product images:**

WB Suggested Anti-CXorf67 Antibody Titration:  
0.2-1 ug/ml; ELISA Titer: 1:1562500; Positive  
Control: Human Placenta