

## Product datasheet for **TA333320**

### LRRN4CL Rabbit Polyclonal Antibody

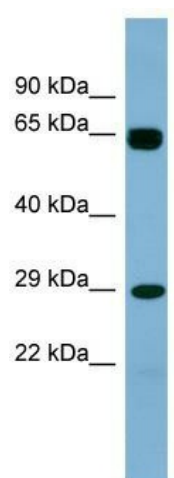
#### Product data:

Product Type:	Primary Antibodies
Applications:	WB
Recommended Dilution:	WB
Reactivity:	Human
Host:	Rabbit
Isotype:	IgG
Clonality:	Polyclonal
Immunogen:	The immunogen for Anti-LRRN4CL Antibody: synthetic peptide directed towards the middle region of human LOC221091. Synthetic peptide located within the following region: PFSPVLHYWLLLWDGSEAAQKGPPLNATVRRRAELKGLKPGGIYVVCVAA
Formulation:	Liquid. Purified antibody supplied in 1x PBS buffer with 0.09% (w/v) sodium azide and 2% sucrose. <i>Note that this product is shipped as lyophilized powder to China customers.</i>
Purification:	Affinity Purified
Conjugation:	Unconjugated
Storage:	Store at -20°C as received.
Stability:	Stable for 12 months from date of receipt.
Predicted Protein Size:	25 kDa
Gene Name:	LRRN4 C-terminal like
Database Link:	<a href="#">NP_981967</a> <a href="#">Entrez Gene 221091 Human</a> <a href="#">Q8ND94</a>
Background:	The function of this protein remains unknown.
Synonyms:	MGC61707
Note:	Immunogen sequence homology: Human: 100%; Mouse: 100%; Rat: 93%; Horse: 93%; Rabbit: 93%; Bovine: 92%; Dog: 79%; Pig: 77%; Guinea pig: 77%
Protein Families:	Transmembrane



[View online »](#)

## Product images:



WB Suggested Anti-LRRN4CL Antibody Titration:  
0.2-1 ug/ml; ELISA Titer: 1:312500; Positive  
Control: 721\_B cell lysate