

Product datasheet for **TA333318**

IER5L Rabbit Polyclonal Antibody

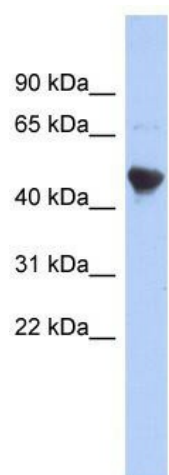
Product data:

Product Type:	Primary Antibodies
Applications:	WB
Recommended Dilution:	WB
Reactivity:	Human
Host:	Rabbit
Isotype:	IgG
Clonality:	Polyclonal
Immunogen:	The immunogen for Anti-IER5L Antibody: synthetic peptide directed towards the middle region of human IER5L. Synthetic peptide located within the following region: SNLISIFGSGFSGLVSRQPDSSEQPPPLNGQLCAKQALASLGAWTRAIVA
Formulation:	Liquid. Purified antibody supplied in 1x PBS buffer with 0.09% (w/v) sodium azide and 2% sucrose.
Purification:	Affinity Purified
Conjugation:	Unconjugated
Storage:	Store at -20°C as received.
Stability:	Stable for 12 months from date of receipt.
Predicted Protein Size:	42 kDa
Gene Name:	immediate early response 5-like
Database Link:	NP_982258 Entrez Gene 389792 Human Q5T953
Background:	The specific function of this protein remains unknown.
Synonyms:	bA247A12.2
Note:	Immunogen sequence homology: Dog: 100%; Rat: 100%; Human: 100%; Mouse: 100%; Bovine: 100%; Pig: 86%; Guinea pig: 86%



[View online »](#)

Product images:



WB Suggested Anti-IER5L Antibody Titration: 0.2-1 ug/ml; ELISA Titer: 1:1562500; Positive Control: NCI-H226 cell lysate