

Product datasheet for **TA333316**

PLPP6 Rabbit Polyclonal Antibody

Product data:

Product Type:	Primary Antibodies
Applications:	WB
Recommended Dilution:	WB
Reactivity:	Human
Host:	Rabbit
Isotype:	IgG
Clonality:	Polyclonal
Immunogen:	The immunogen for Anti-PPAPDC2 Antibody: synthetic peptide directed towards the N terminal of human PPAPDC2. Synthetic peptide located within the following region: MPSPRRSMGRPLGVSASSSSSSPGSPAHHGGGGGSRFEFQSLSSRATA
Formulation:	Liquid. Purified antibody supplied in 1x PBS buffer with 0.09% (w/v) sodium azide and 2% sucrose. <i>Note that this product is shipped as lyophilized powder to China customers.</i>
Purification:	Affinity Purified
Conjugation:	Unconjugated
Storage:	Store at -20°C as received.
Stability:	Stable for 12 months from date of receipt.
Predicted Protein Size:	32 kDa
Gene Name:	phospholipid phosphatase 6
Database Link:	NP_982278 Entrez Gene 403313 Human Q8IY26
Background:	PPAPDC2 is the phosphatase that dephosphorylates presqualene diphosphate (PSDP) into presqualene monophosphate (PSMP), suggesting that it may be indirectly involved in innate immunity. PSDP is a bioactive lipid that rapidly remodels to presqualene monophosphate PSMP upon cell activation. PPAPDC2 displays diphosphate phosphatase activity with a substrate preference for PSDP > FDP > phosphatidic acid.
Synonyms:	bA6J24.6; PDP1; PPAPDC2; PSDP

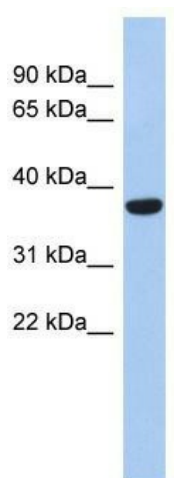


[View online »](#)

Note: Immunogen sequence homology: Human: 100%; Bovine: 100%; Rabbit: 93%; Rat: 87%; Dog: 86%; Pig: 81%; Mouse: 79%

Protein Families: Transmembrane

Product images:



WB Suggested Anti-PPAPDC2 Antibody Titration:
0.2-1 ug/ml; ELISA Titer: 1:62500; Positive Control:
Human heart