

Product datasheet for **TA333314**

APOBEC4 Rabbit Polyclonal Antibody

Product data:

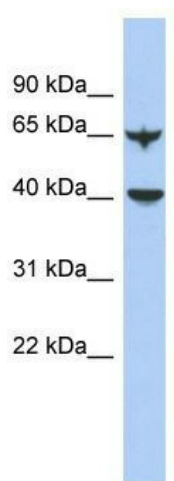
Product Type:	Primary Antibodies
Applications:	WB
Recommended Dilution:	WB
Reactivity:	Human
Host:	Rabbit
Isotype:	IgG
Clonality:	Polyclonal
Immunogen:	The immunogen for Anti-APOBEC4 Antibody: synthetic peptide directed towards the N terminal of human APOBEC4. Synthetic peptide located within the following region: LKTSSGSLVQKGHASSCTGNVIHPESMLFEMNGYLDSAIYNNDSIRHIL
Formulation:	Liquid. Purified antibody supplied in 1x PBS buffer with 0.09% (w/v) sodium azide and 2% sucrose.
Purification:	Affinity Purified
Conjugation:	Unconjugated
Storage:	Store at -20°C as received.
Stability:	Stable for 12 months from date of receipt.
Predicted Protein Size:	41 kDa
Gene Name:	apolipoprotein B mRNA editing enzyme catalytic polypeptide like 4
Database Link:	NP_982279 Entrez Gene 403314 Human Q8WW27
Background:	APOBEC4 is a putative C to U editing enzyme whose physiological substrate is not yet known. This gene encodes a member of the AID/APOBEC family of polynucleotide (deoxy)cytidine deaminases, which convert cytidine to uridine. Other AID/APOBEC family members are involved in mRNA editing, somatic hypermutation and recombination of immunoglobulin genes, and innate immunity to retroviral infection.
Synonyms:	C1orf169



[View online »](#)

Note: Immunogen sequence homology: Dog: 100%; Pig: 100%; Human: 100%; Bovine: 100%; Rat: 93%; Horse: 93%; Guinea pig: 93%

Product images:



WB Suggested Anti-APOBEC4 Antibody Titration:
0.2-1 ug/ml; ELISA Titer: 1:312500; Positive
Control: Human Lung