

Product datasheet for **TA333313**

SPINK6 Rabbit Polyclonal Antibody

Product data:

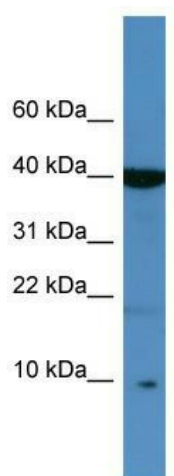
Product Type:	Primary Antibodies
Applications:	WB
Recommended Dilution:	WB
Reactivity:	Human
Host:	Rabbit
Isotype:	IgG
Clonality:	Polyclonal
Immunogen:	The immunogen for Anti-SPINK6 Antibody: synthetic peptide directed towards the middle region of human SPINK6. Synthetic peptide located within the following region: GEFQDPKVYCTRESNPHCGSDGQTYGNKCAFCKAIVKSGGKISLKHPGKC
Formulation:	Liquid. Purified antibody supplied in 1x PBS buffer with 0.09% (w/v) sodium azide and 2% sucrose. <i>Note that this product is shipped as lyophilized powder to China customers.</i>
Purification:	Affinity Purified
Conjugation:	Unconjugated
Storage:	Store at -20°C as received.
Stability:	Stable for 12 months from date of receipt.
Predicted Protein Size:	8 kDa
Gene Name:	serine peptidase inhibitor, Kazal type 6
Database Link:	NP_995313 Entrez Gene 404203 Human Q6UWN8
Background:	The protein encoded by this gene is a Kazal-type serine protease inhibitor that acts on kallikrein-related peptidases in the skin. Two transcript variants the same protein have been found for this gene.
Synonyms:	BUSI2; UNQ844
Note:	Immunogen sequence homology: Human: 100%; Pig: 93%; Dog: 85%; Horse: 85%; Bovine: 85%; Guinea pig: 85%



[View online »](#)

Protein Families: Secreted Protein, Transmembrane

Product images:



WB Suggested Anti-SPINK6 Antibody Titration:
0.2-1 ug/ml; ELISA Titer: 1:312500; Positive
Control: Jurkat cell lysate