

Product datasheet for **TA333312**

RASL11A Rabbit Polyclonal Antibody

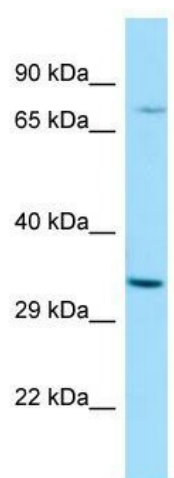
Product data:

Product Type:	Primary Antibodies
Applications:	WB
Recommended Dilution:	WB
Reactivity:	Human
Host:	Rabbit
Isotype:	IgG
Clonality:	Polyclonal
Immunogen:	The immunogen for Anti-RASL11A Antibody is: synthetic peptide directed towards the N-terminal region of Human RASL11A. Synthetic peptide located within the following region: SAMIVRFLTKRFIGDYEPNTGKLYSRLVYVEGDQLSLQIQDTPGGVQIQD
Formulation:	Liquid. Purified antibody supplied in 1x PBS buffer with 0.09% (w/v) sodium azide and 2% sucrose.
Purification:	Affinity Purified
Conjugation:	Unconjugated
Storage:	Store at -20°C as received.
Stability:	Stable for 12 months from date of receipt.
Predicted Protein Size:	27 kDa
Gene Name:	RAS like family 11 member A
Database Link:	NP_996563 Entrez Gene 387496 Human Q6T310
Background:	RASL11A is a member of the small GTPase protein family with a high degree of similarity to RAS proteins.
Synonyms:	1110065D03Rik; AI852031; family 11; member A; MGC144485; RAS-like; RAS-like family 11 member A
Note:	Immunogen sequence homology: Dog: 100%; Pig: 100%; Rat: 100%; Horse: 100%; Human: 100%; Mouse: 100%; Bovine: 100%; Rabbit: 100%; Guinea pig: 100%; Zebrafish: 92%



[View online »](#)

Product images:



WB Suggested Anti-RASL11A Antibody; Titration:
1.0 ug/ml; Positive Control: MCF7 Whole Cell